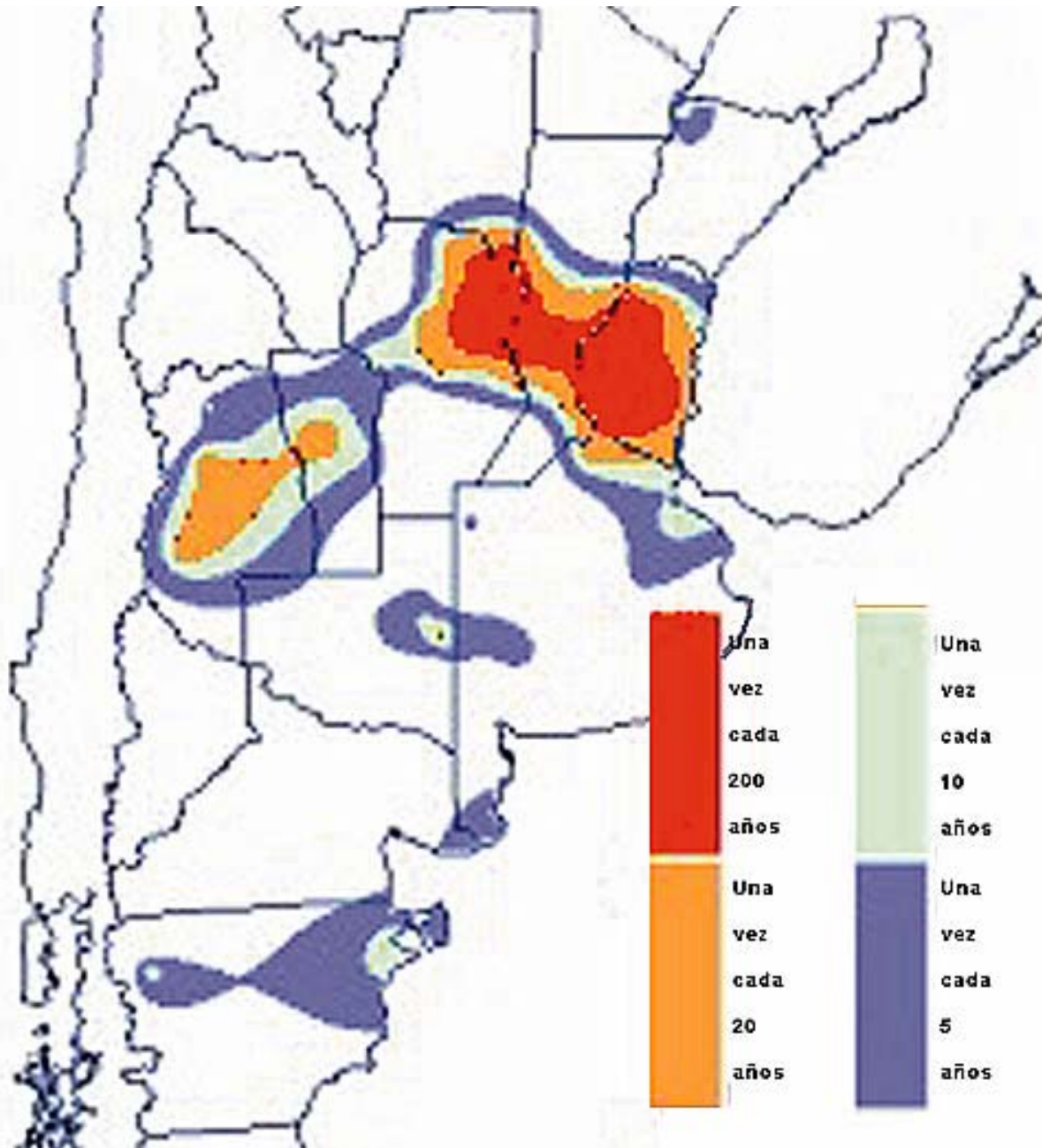
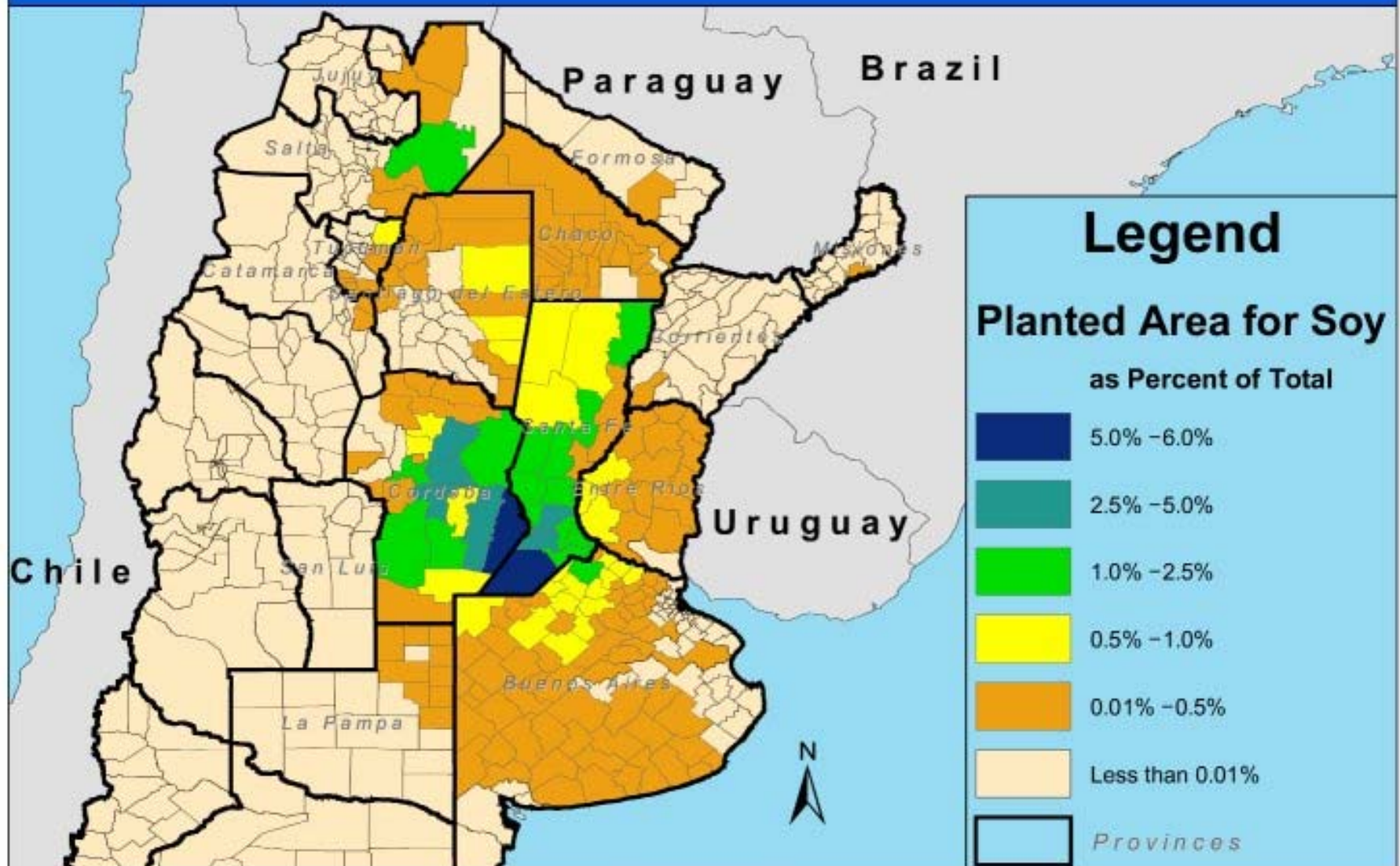


March 2007 Argentine Rains – 200 year floods



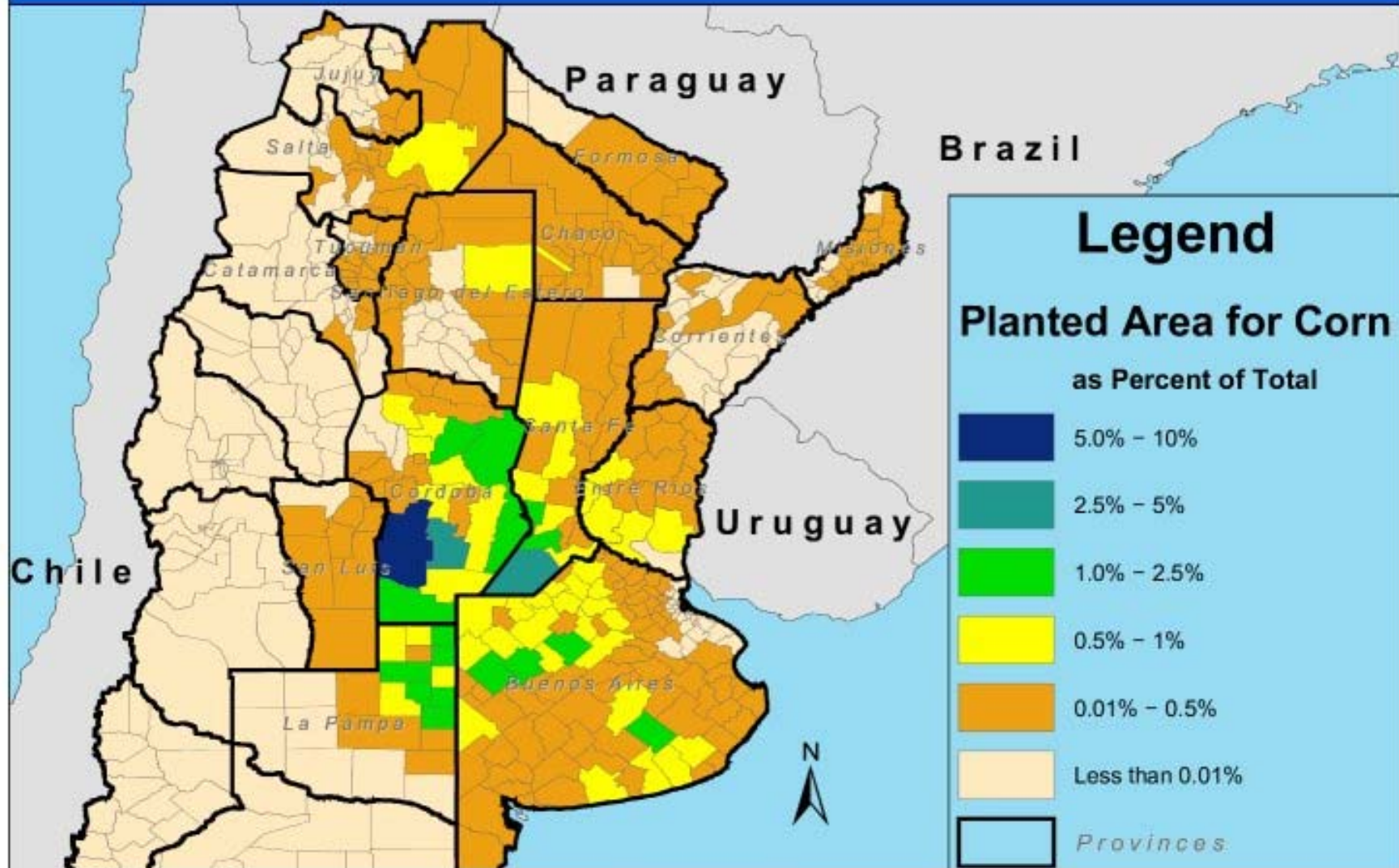
Argentine Soybean Planted Area



U.S. Department of Agriculture
Foreign Agricultural Service
Production Estimates and Crop Assessment Division
<http://www.fas.usda.gov/pecad/>
Robert.tetrault@usda.gov

Data Source:
Argentine Agricultural Secretariat (SAGPyA)
Department-level statistics for the five-year average of
planted area for soybean (1997/98 to 2001/02)
<http://www.sagpya.mecon.gov.ar/>

Argentine Corn Planted Area



U.S. Department of Agriculture
Foreign Agricultural Service
Production Estimates and Crop Assessment Division
<http://www.fas.usda.gov/pecad/>
Robert.tetrault@usda.gov

Data Source:
Argentine Agricultural Secretariat (SAGPyA)
Department-level statistics for the five-year average of
planted area for corn (1997/98 to 2001/02)
<http://www.sagpya.mecon.gov.ar/>

Santa Fe Province, Argentina 3 29 07







Potential area to be cleared for crops



Rio Plata, Argentina: 35-40 miles wide & can take ocean vessels several hundred miles inland

