



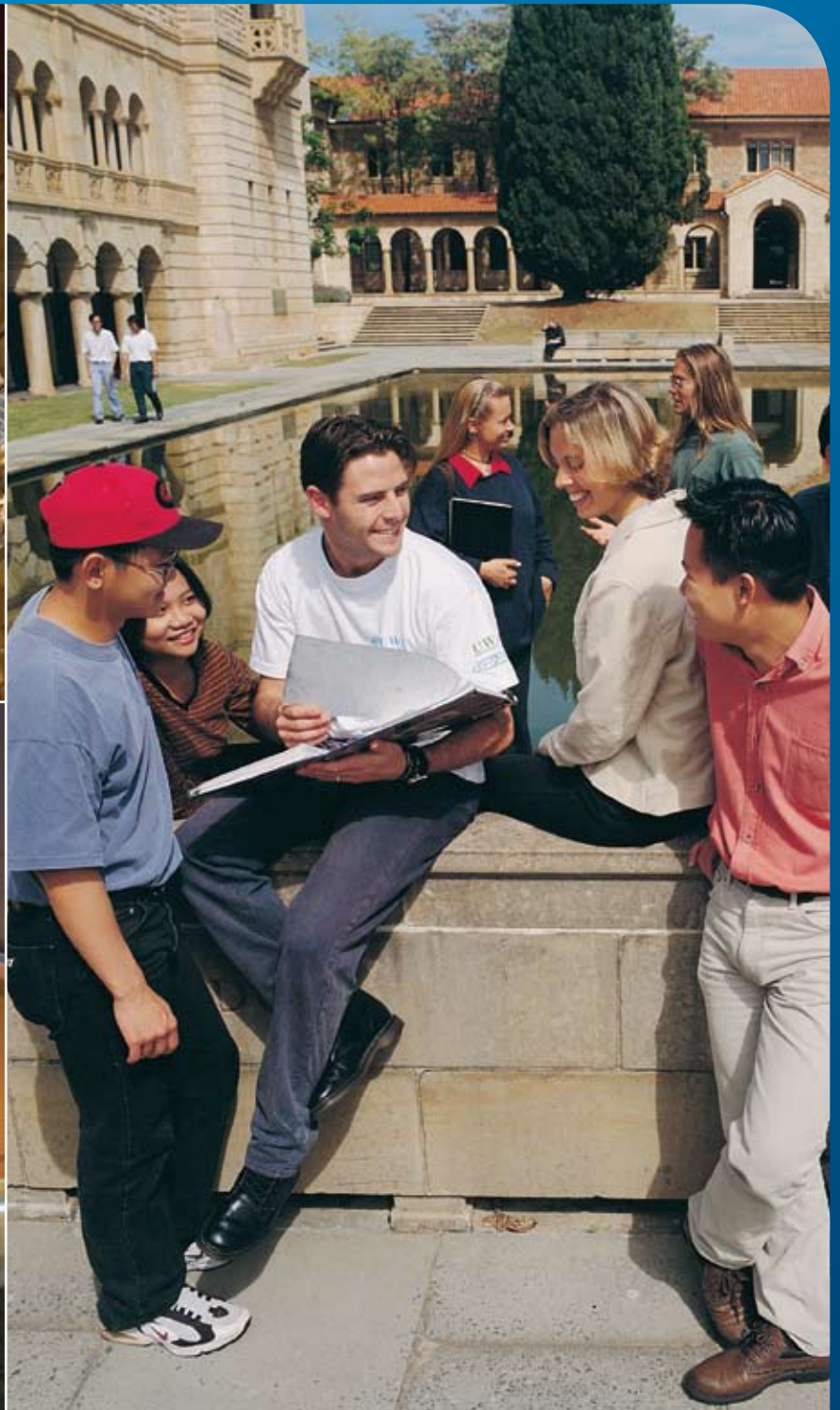
THE UNIVERSITY OF  
WESTERN AUSTRALIA  
*Achieving International Excellence*

Business School

# BHP Billiton Chair in the Business of Resources

Information for Candidates

May 2008





# Appointment of BHP Billiton Chair in the Business of Resources

## Contents

Introduction	4
The University of Western Australia	6
The Business School at the University of Western Australia	8
Role, Responsibilities and Selection Criteria and Conditions of Employment	10
BHP Billiton	11
Western Australia and the City of Perth	12
Applications	14

# Introduction

Applications are now sought for the tenurable post of BHP Billiton Chair in the Business of Resources at the Business School, University of Western Australia. This is the second in a series of prestigious endowed chairs for the Business School in partnership with business and industry.

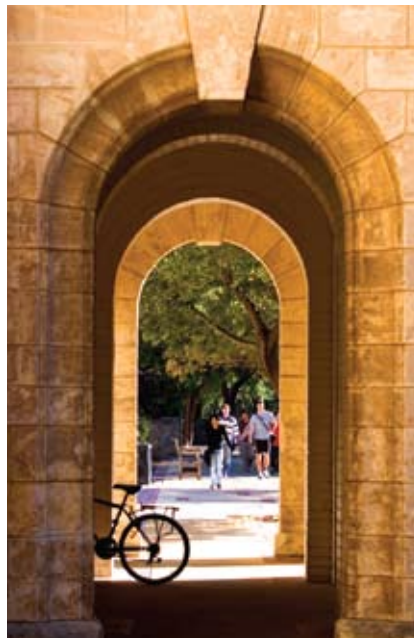
A highly competitive remuneration package is being offered along with generous service conditions. The successful candidate is expected to have published extensively at the highest level of academic scholarship, and to have a track record of successful grants and in the conduct of applied research. The appointee will most likely have an internationally acknowledged leadership and standing in one or more of the following fields: resource and mineral economics, resource and energy policy, global pricing of resources and associated risk management, and/or to have an outstanding track record of successful research in the resources sector. In addition to demonstrating international excellence through research, the successful applicant will be expected to play a leadership role in the development of relationships with the resources sector.

The University of Western Australia has a long and distinguished history and has produced many outstanding graduates who have given service to

Australia and the international community. As a member of the prestigious Group of Eight research-intensive universities, it is consistently ranked amongst the top Australian universities. The Business School has recently embarked on an ambitious program of strategic change, designed to further extend its reputation and influence as the premier institution in the region.

The BHP Billiton Professor will be expected to take up his/her post by early 2009 when the School moves into spectacular new premises overlooking the Swan River in Perth.

For further information on this position, including details of remuneration and conditions of service, please contact the Dean of the Business School, Tracey Horton on +61 8 6488 2883 or email [tracey.horton@uwa.edu.au](mailto:tracey.horton@uwa.edu.au)





# The University of Western Australia

The University of Western Australia, a member of Australia's Group of Eight, combines the traditions of the world's old and great universities with the vitality and excitement of innovative study and research in the 21st Century.

It is recognised internationally as an excellent teaching and research University, and a leading intellectual and creative resource to the community it serves.

Situated on an attractive garden campus on the Swan River just five kilometres from Perth's city centre, The University of Western Australia is a high-quality research-intensive university with a broad and balanced coverage of disciplines in the arts, science and major professions. It is Western Australia's oldest university, established in 1911, and currently has a student population of about 15,500.

The University has acquired an international reputation for excellence and enterprise and is regarded as one of Australia's best research institutions. Its strong research culture sees it attract high levels of competitive research funding. At the same time the University places great emphasis on high quality in teaching and learning, and is committed to the development of innovative and responsive programmes. It has focused on the teaching-research nexus, so that teaching and learning take place in an atmosphere of research scholarship.

The University's high quality teaching and research ensures it remains the university of preference for Western Australia's highest achieving school leavers, as well as attracting high-calibre undergraduate and postgraduate students from around the nation and overseas.

The quality of the undergraduate student population is extremely high by national and international standards.

The University is recognised nationally and internationally for the quality of its academic staff and has strong strategic partnerships with industry, the professions and government. It operates in collaboration with other universities of research in Australia and around the world.

The University of Western Australia's graduates are highly competitive internationally, achieving success in higher study and in wide-ranging fields of employment. Many graduates have risen to prominence in leadership roles in industry, government, education and the professions, in Australia and overseas.

## Specific Information on The University of Western Australia:

- The University of Western Australia Web site  
[www.uwa.edu.au](http://www.uwa.edu.au)
- Annual Reports  
[www.publishing.uwa.edu.au/annualreport/](http://www.publishing.uwa.edu.au/annualreport/)
- Strategic Plan  
[www.admin.uwa.edu.au/reg/stratplan.html](http://www.admin.uwa.edu.au/reg/stratplan.html)
- Operational Priorities Plan  
[www.admin.uwa.edu.au/reg/sec/appindes.htm](http://www.admin.uwa.edu.au/reg/sec/appindes.htm)
- Research and Research Training Management Plan  
[wwwadmin.uwa.edu.au/reg/sec/rmp-indes.htm](http://wwwadmin.uwa.edu.au/reg/sec/rmp-indes.htm)
- Statistics  
[www.stats.uwa.edu.au](http://www.stats.uwa.edu.au)
- Research Centres  
[www.research.uwa.edu.au/centres/welcome/centres](http://www.research.uwa.edu.au/centres/welcome/centres)
- Faculties  
<http://www.uwa.edu.au/students/>
- Australian Universities Quality Agency (AUQA) The University of Western Australia Performance Portfolio  
[www.qualityassurance.uwa.edu.au](http://www.qualityassurance.uwa.edu.au)





# The UWA Business School

The UWA Business School is one of the premier Business Schools in the Asia Pacific Region and has a reputation for international excellence in research, teaching and learning. When classes commenced at the University of Western Australia in 1911, Economics was one of the first courses offered. Since then the teaching and research of business and management has developed into the University's largest Faculty in terms of student numbers.

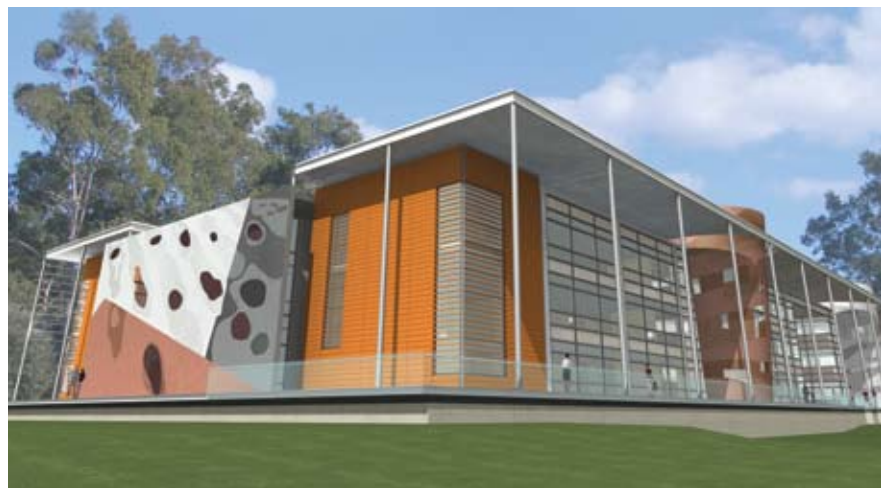
The Business School has a complement of over 160 full-time staff servicing more than 4500 undergraduate and postgraduate students. Graduates from the School have continued on to become leaders in a variety of industries throughout the world. Results from a Graduate Destinations Survey show that The UWA Business School has the highest rate of graduate employment in Western Australia, and the second highest in all Australian universities.

The Business School is supported by a Board of prominent UWA alumni and leaders in industry and commerce who are committed to positioning the School as a leading institution world-wide. This high-level group lends their energy and influence to help build links between the Business School and the Australian and international community.

Strengthening this foundation is the design and construction of a new Business School building due for completion in 2008 which will include leading-edge facilities to support best practice in teaching and learning, whilst working alongside the evolving needs of today's business community.

## Research Areas

The Business School is proud of its research achievements, and is committed to maintaining an international reputation for scholarly excellence and relevance in pure and applied research. Research clusters within the UWA Business School are aligned with the following disciplinary areas: Economics, Financial Studies (Financial and Management Accounting Finance), Marketing, Human Resources and Industrial Relations, Management and Business Information Management.





# Role, Responsibilities, Selection Criteria and Conditions of Employment

The Business School also offers high quality research training for students through its honours and higher degree by research programs.

At the Business School we believe that the quality of our research provides essential depth and integrity to our teaching programs.

The BHP Chair in the Business of Resources will provide leadership and foster excellence in the Business Schools' teaching and research activities and community engagement with the resources sector.

## Responsibilities will include:

- Maintaining a world class research program, including contributing to the Business School's research training and teaching programs.
- Playing a leadership role within the faculty generally and actively contributing to the strategic direction of the Business School.
- Active involvement in developing relationships with the resource sector.

## Selection criteria:

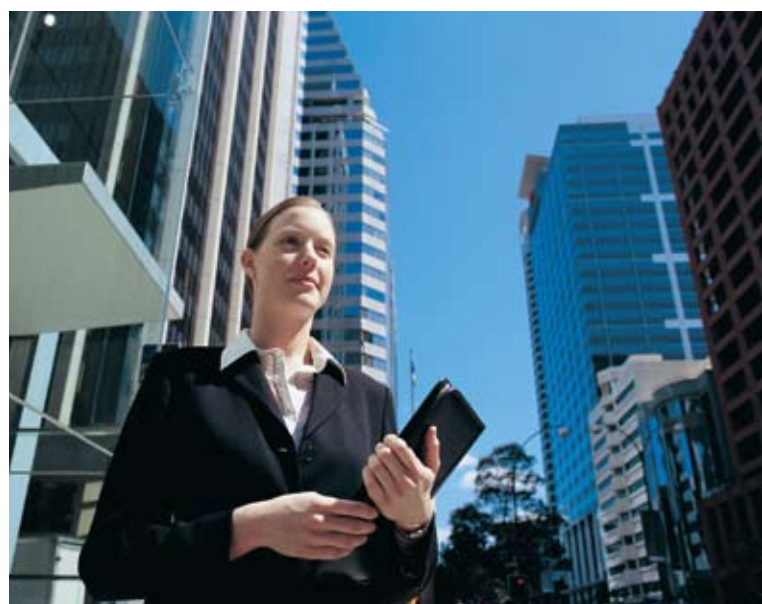
- Internationally acknowledged leadership and standing in one or more of the following fields (resource and mineral economics, resource and energy policy, global pricing of resources and associated risk management), and/or to have an outstanding track record of successful research in the resources sector.
- Substantial publication record at the highest level of academic scholarship.
- Evidence of sustained ability to foster the research of groups and individuals.
- Track record of successful external partnership, the conduct of applied research and the ability to generate research grants.
- Excellent interpersonal and communication skills, particularly with respect to building and leading teams.
- Commitment to principles of equity and diversity.

## Conditions of Employment:

The appointment will be tenurable and will be subject to annual performance reviews.

An attractive and flexibly constructed remuneration package will be negotiated on the basis of the total cost to the University: It will include:

- Employer contribution to superannuation of 17%.
- Recreation leave of 20 working days per annum.
- Long service leave after 10 years.
- Study leave of two calendar months for each completed year of service.
- In addition, reasonable assistance will be provided for relocation expenses including air fares for the appointee and dependants.



# BHP Billiton Chair in the Business of Resources

## BHP Billiton is the world's largest diversified resources company.

We are distinguished from other resource companies by the quality of our assets; our deep inventory of growth projects; our customer-focused marketing; our diversification across countries, commodities, and markets; and our Petroleum business.

We have some 39,000 employees working in over 100 operations in 25 countries. Reflecting our aim to be a premier global company, we occupy industry leader or near industry leader positions in major commodity businesses, including aluminium, energy coal and metallurgical coal, copper, manganese, iron ore, uranium, nickel, silver and titanium minerals, and have substantial interests in oil, gas, liquefied natural gas and diamonds.

BHP Billiton's global headquarters are in Melbourne, with a major office in London. Supporting offices are located around the world. BHP Billiton has primary listings on the Australian and London Stock Exchanges, with a major secondary listing on the Johannesburg Stock Exchange and two American Depositary Receipt listings on the New York Stock Exchange.

Our core purpose is to create long term value through the discovery, development and conversion of natural resources and the provision of innovative customer and market focussed solutions.

BHP Billiton has adopted a business model based on customer-oriented groupings called Customer Sector Groups (CSGs). This structure allows us to focus on the needs of our customers. These CSGs are supported by marketing 'hubs' located in The Hague and Singapore.

More than 20 per cent of the group's assets and many of its key growth projects are located in Western Australia.

All of BHP Billiton's businesses in WA are among the world leaders in resource production or processing, and have outstanding potential for future expansion. As a result, Western Australia has a significant place in BHP Billiton's asset portfolio and management structure.

The investment in WA is based on four key commodities – iron ore, nickel, petroleum and alumina. Operations in each sector are well established, sustainable and growing.

In WA, BHP Billiton employs over 14,000 permanent employees and contractors.

BHP Billiton is creating career opportunities for Western Australia's greatest assets – our people.

- Offering attractive salaries and conditions.
- Promoting diverse, global work opportunities.
- Building a values-based culture of responsibility and professionalism.
- Encouraging Indigenous employment.
- Offering graduate programs, scholarships and apprenticeships.

For more information go to [www.bhpbilliton.com](http://www.bhpbilliton.com)



# Western Australia and the City of Perth

Western Australia is an enormous State covering 250 million hectares of some of the most ancient landscapes in the world that include rugged gorges, tropical reefs, towering forests, woodlands, white beaches and 12,500 kilometres of coastline. The State has one of the most diverse flora found anywhere, from giant karri trees to the renowned spring wildflowers. There are about 3,000 native species of animals, birds and fish – and many more insects. The State's population is rapidly growing and is nearing two million.

Western Australia is located in the world's fastest growing and developing economic regions – the Asia Pacific and Indian Ocean rim regions. Western Australia is one of the most dynamic and rapidly growing economies in the Asian Regions, accounting for 25 per cent of the nation's exports. Each year Western Australia's high quality public and private education systems attract more than 12,000 fee paying overseas students.

Western Australia's economy is based significantly on primary products, from agriculture and horticulture, mining, and, to a lesser extent, forestry and fishing. Gold and aluminium are the mainstay of the mining industry, supplemented by nickel, diamond and mineral sands. Iron ore is the state's major export commodity. Major resources of oil and natural gas are extracted from the northwest shelf (off the Port Hedland-Karratha coast) and the Timor Sea. The North West Shelf Project is Australia's biggest resource development. Production of oil from the northwest shelf was expected to surpass that from Bass Strait by the beginning of the 21st Century. Natural gas is exported in liquefied form and is also piped to the southwest for domestic and industrial use, including power generation.

The state's major industrial area is located at Kwinana in the Perth metropolitan region along the shores of Cockburn Sound. The area has several major industries, including oil, alumina, and nickel refineries. The state's service industry exports local expertise in areas such as resource development, environmental management, surveying, engineering and construction, and information technology applications are already well established in overseas markets.

Perth, the capital of Western Australia has a population of over 1.4 million. It is a cosmopolitan city, with a wide ethnic and cultural diversity. It is situated on the banks of

the Swan River and the Central Business District is less than 12 kilometres from the Indian Ocean. Perth enjoys a Mediterranean climate, with more hours of sunshine than any other capital city in Australia. Summers are hot and dry and the winters mild and wet. Its world-famous beaches, extensive parklands and wonderful variety of restaurants and cafes provide a superb living environment. Perth is well served with art galleries, theatres and cinemas and is home to the Western Australian Symphony Orchestra. The cultural highlight of the year is the Perth International Arts Festival, hosted by The University of Western Australia.

Perth provides excellent junior and secondary schools and many renowned private and state schools located close to the University. It is very much an "education city" with four publicly-funded universities. There is a variety of housing in areas close to the University. Perth can offer an inner-city lifestyle with housing close to the restaurants and entertainment facilities or a more rural lifestyle in the hills outside the city.

Located on the Indian Ocean rim, Western Australia is ideally positioned to interact with Asia, the Indian Ocean region and beyond. The Indian Ocean region, which includes South Asia, the Middle East and Africa, accounts for over one-third of the world's population. Its close location to Asia also means the state shares the same or similar time zones with them.

## Useful Web Sites on Western Australia

<http://www.perthwa.com.au>

<http://www.countrywide.com.au>

<http://www.isd.com.au>

<http://www.westernaustralia.net>



# Applications

Thank you for your interest. If you wish to proceed, the following information will assist you with your application.

There are no application forms. Your application should include the following:

- A curriculum vitae that provides your personal details, qualifications and work history.
- A list of publications.
- The names, email, mailing addresses and the telephone contact details of three referees who can be contacted for a confidential report.

## Lodging Your Application

Email your application in rich Text Format or Microsoft Word format to Michael McAnearney CEO-International for Gerard Daniels (michaelm@gerard-daniels.com), the Executive Search Firm assisting the University on this appointment. Enquiries may also be made direct to Michael on +61 407711488.





THE UNIVERSITY OF  
WESTERN AUSTRALIA  
*Achieving International Excellence*

## Business School

The University of Western Australia  
M252, 35 Stirling Highway, Crawley WA 6009

Tel +61 8 6488 2544

Fax +61 8 6488 1068

Web [www.business.uwa.edu.au](http://www.business.uwa.edu.au)

CRICOS Provider Code: 00126G