

# Summary of 2000-2007 Population Changes in Iowa's Cities

---

Liesl Eathington & Dave Swenson  
Regional Capacity Analysis Program (ReCAP)  
Iowa State University  
(515) 294-2954  
[leathing@iastate.edu](mailto:leathing@iastate.edu)

## Overview

- ▶ Between 2000 and 2007, 727 or 75 percent of the state's cities posted net population declines.
- ▶ From 2006 to 2007, city populations grew by 14,800 persons, and that growth was shared by 374 communities.
- ▶ Figure 1. The vast preponderance of population gain in Iowa is among cities with populations of 10,000 to 49,999. Since 2000, 60.3 percent of the state's net gain has occurred in those places, with 36 percent accumulating in places from 2,500 to 9,999, and just 11.4 percent in metro cities. The net gain for cities under 1,000 was negative.
- ▶ Figure 2. On proportional basis as a group, all metropolitan cities posted growth, with the highest rates of growth among cities from 2,500 to 9,999 and from 10,000 to 49,999. All nonmetropolitan cities, whether adjacent to metropolitan areas or not, taken as a group, posted proportional declines.
- ▶ Figure 3. The numerical gains area stark: Cities in Iowa's metropolitan counties grew by 95,100 yet the state's cities grew by just 62,341 persons. That means that the state's metros are statistically absorbing all of the rest of the state's population declines of 32,759 plus they are attracting in migration to account for the rest of their gain.
- ▶ Table 2. Notwithstanding the net overall gains by our metropolitan counties, the cities, in order, of Sioux City, Waterloo, and Des Moines posted the greatest estimated population declines during the decade. The remaining declining cities were several of the state's major industrial and regional trade centers.
- ▶ Table 3. The top 10 gaining cities were led by Ankeny, Urbandale, and West Des Moines. Five were in the Des Moines metropolitan area, four in the Iowa City and Cedar Rapids metro areas, with Ames rounding out the list.
- ▶ Table 4. The top ten population rate loss cities (with 500 or greater population) all exceeded population declines of 12 percent. The top three losers were Walnut, Dows, and Quasqueton.
- ▶ Table 5. The top 10 gaining places by way of rate of gain all had population changes in excess of 53 percent (we do not count Vedic City as it is newly incorporated). Waukee leads the list at 124 percent followed by North Liberty at 105 percent and Granger at 94 percent.

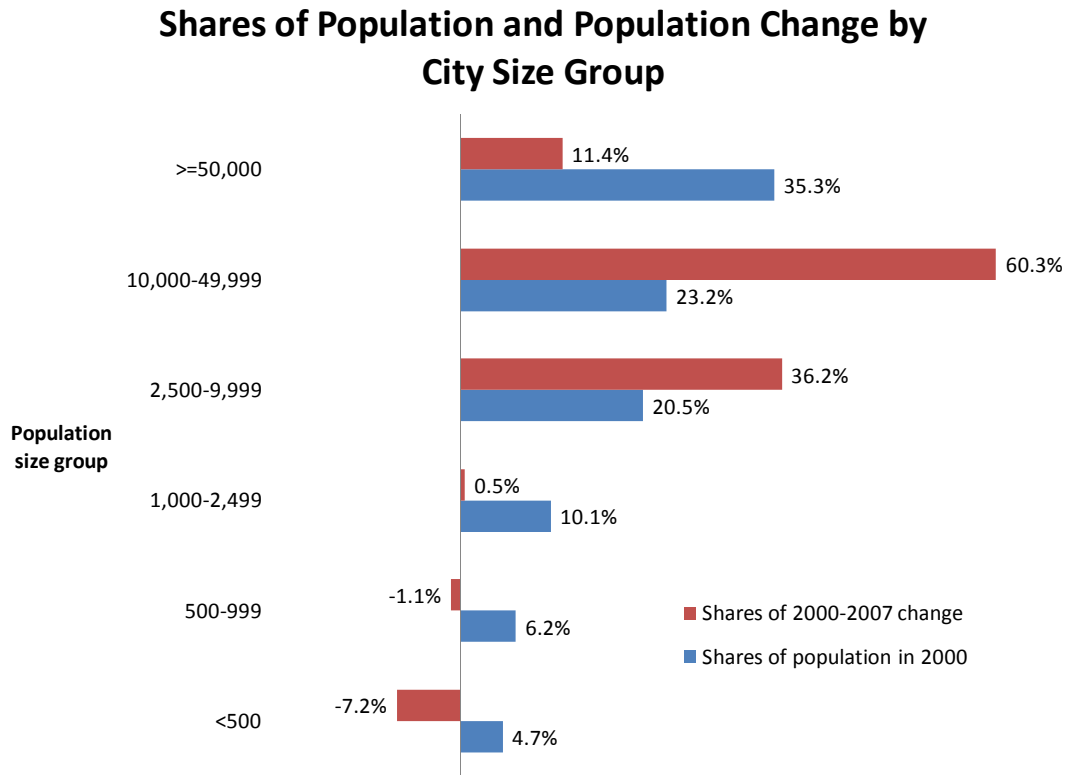
- ▶ Table 6. For Iowa's 10 largest cities we see mixed results. Four, Des Moines, Sioux City, Waterloo, and Dubuque had lower populations in 2007 than in July of 2000. The greatest numeric decline is Sioux City. The greatest numeric gain and rate of gain is in West Des Moines. The greatest rate of loss is in Waterloo.
- ▶ Table 7. Among 95 cities with 50,000 or greater population in Iowa and eight neighboring states, West Des Moines ranked 15<sup>th</sup> as measured by its rate of growth for the 2000 to 2007 period and 20<sup>th</sup> for its 1-year growth from 2006 to 2007.

Data Source: 2007 Sub-County Population Estimates, U.S. Census Bureau

## Population Changes by Size of Cities

Figure 1 below looks at the overall distribution of Iowa's city-dwelling population by size of city. All of Iowa's 947 incorporated places are grouped into one of six categories based on their population size in the year 2000. The overall shares of the city-dwelling population in that year are shown for each size group. Their beginning population shares are contrasted with their share of change in the total city-dwelling population in Iowa from 2000 to 2007.

Figure 1



## Shares of Population Change by City Size and Urbanization Level of the Region

Table 1 illustrates the change in shares of Iowa’s city-dwelling population by city size group and by the urbanization level of the counties in which the cities are located. Three urbanization levels are detailed: (1) metropolitan counties as defined by the U.S. Office of Management and Budget, (2) non-metropolitan counties that are adjacent to a county in a metropolitan region, and (3) non-metropolitan counties that are not adjacent to a metropolitan area.

- Among the population living in cities in Iowa, 61.8 percent live in a metropolitan county -- up from 59.3 percent in 2000. Smaller cities in these metropolitan counties grew more rapidly than the large, core cities. The overall share for cities with 50,000 or more residents actually declined from 35.3 percent to 34.7 percent of all city-dwelling residents in Iowa.
- Another 19.3 percent of city residents live in a county that is adjacent to a metropolitan area.
- The remaining 18.9 percent of city residents live in a county that is not adjacent to a metropolitan area.

**Table 1. Change in Shares of the Population Living in Iowa’s Cities by City Size and County Type, 2000-2007**

Size	Metro	Adjacent	Not adjacent	All county types
<500	0.0%	-0.1%	-0.2%	-0.3%
500-999	0.1%	-0.1%	-0.2%	-0.2%
1,000-2,499	0.2%	-0.3%	-0.2%	-0.3%
2,500-9,999	1.1%	-0.4%	-0.3%	0.4%
10,000-49,999	1.7%	-0.2%	-0.5%	1.0%
>=50,000	-0.6%			-0.6%
All cities	2.5%	-1.1%	-1.4%	0.0%

Figures 2 and 3 show the rates and amounts of 2000-2007 population change for each size group by county type. In the aggregate, cities in metropolitan areas grew regardless of size. Cities outside of metropolitan areas, on net, lost population from 2000 to 2007.

- The fastest-growing cities were those of 2,500 to 9,999 population located in metropolitan counties.
- The fastest-declining cities were those of 500 or fewer population located in counties adjacent to a metro area.
- The greatest numeric gains occurred in cities of 10,000 to 49,999 population located in metropolitan counties.
- The greatest numeric losses occurred in cities of 10,000 to 49,999 population located in non-adjacent counties.

Figure 2

### Rates of Population Change for Cities by Size and County Type, 2000-2007

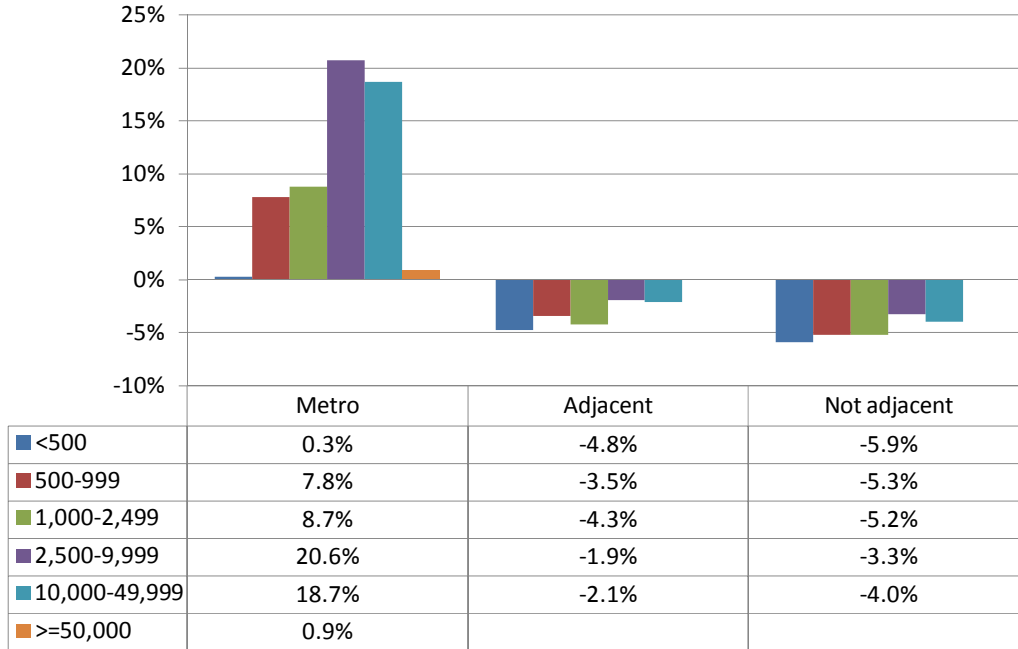
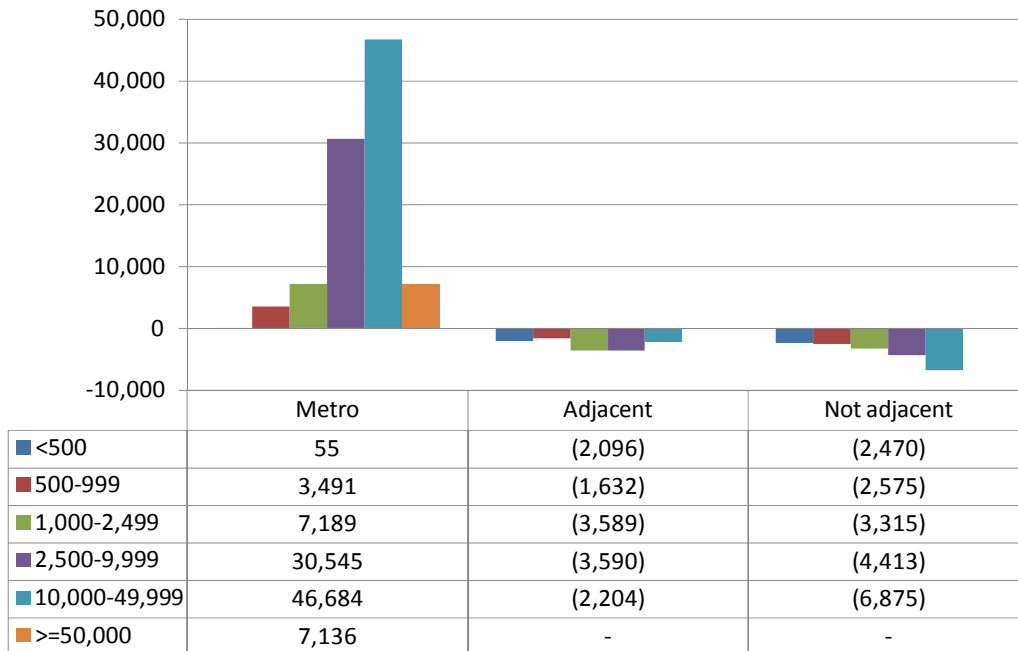


Figure 3

### Net Population Change for Cities by Own Size and County Type, 2000-2007



## Top 10 Population Gains and Losses by Number and Rate

Tables 2-5 detail the population changes for the bottom and top 10 performers among Iowa's cities. Cities with fewer than 500 population in the year 2000 were excluded from these rankings.

**Table 2. Top 10 Population Losses Among All Cities in Iowa**

City	Population in 2007	Population in 2000	Numeric change 2000-2007	Percentage change 2000-2007	Ranking by numeric change
Sioux City	82,684	85,060	(2,376)	-2.8%	947
Waterloo	66,387	68,734	(2,347)	-3.4%	946
Des Moines	196,998	199,033	(2,035)	-1.0%	945
Mason City	27,505	29,270	(1,765)	-6.0%	944
Burlington	25,382	26,846	(1,464)	-5.5%	943
Clinton	26,616	27,772	(1,156)	-4.2%	942
Fort Dodge	25,230	26,344	(1,114)	-4.2%	941
Keokuk	10,487	11,427	(940)	-8.2%	940
Fort Madison	10,897	11,682	(785)	-6.7%	939
Cherokee	4,786	5,369	(583)	-10.9%	938

**Table 3. Top 10 Population Gains Among All Cities in Iowa**

City	Population in 2007	Population in 2000	Numeric change 2000-2007	Percentage change 2000-2007	Ranking by numeric change
Ankeny	40,582	27,430	13,152	47.9%	1
Urbandale	38,104	29,266	8,838	30.2%	2
West Des Moines	54,726	47,132	7,594	16.1%	3
Waukee	12,029	5,370	6,659	124.0%	4
Johnston	15,261	8,749	6,512	74.4%	5
Marion	32,172	26,463	5,709	21.6%	6
North Liberty	10,982	5,359	5,623	104.9%	7
Cedar Rapids	126,396	121,524	4,872	4.0%	8
Iowa City	67,062	62,517	4,545	7.3%	9
Ames	54,745	50,814	3,931	7.7%	10

**Table 4. 10 Fastest-Declining Cities in Iowa (with 2000 population > 500)**

<b>City</b>	<b>Population in 2007</b>	<b>Population in 2000</b>	<b>Numeric change 2000-2007</b>	<b>Percentage change 2000-2007</b>	<b>Ranking by % change</b>
<b>Walnut</b>	721	877	(156)	-17.8%	923
<b>Dows</b>	563	675	(112)	-16.6%	912
<b>Quasqueton</b>	485	574	(89)	-15.5%	907
<b>Early</b>	525	605	(80)	-13.2%	886
<b>Laurens</b>	1,288	1,476	(188)	-12.7%	876
<b>Rolfe</b>	590	675	(85)	-12.6%	874
<b>Scranton</b>	529	604	(75)	-12.4%	871
<b>Odebolt</b>	1,012	1,153	(141)	-12.2%	867
<b>Keota</b>	900	1,025	(125)	-12.2%	865
<b>Strawberry Point</b>	1,218	1,386	(168)	-12.1%	864

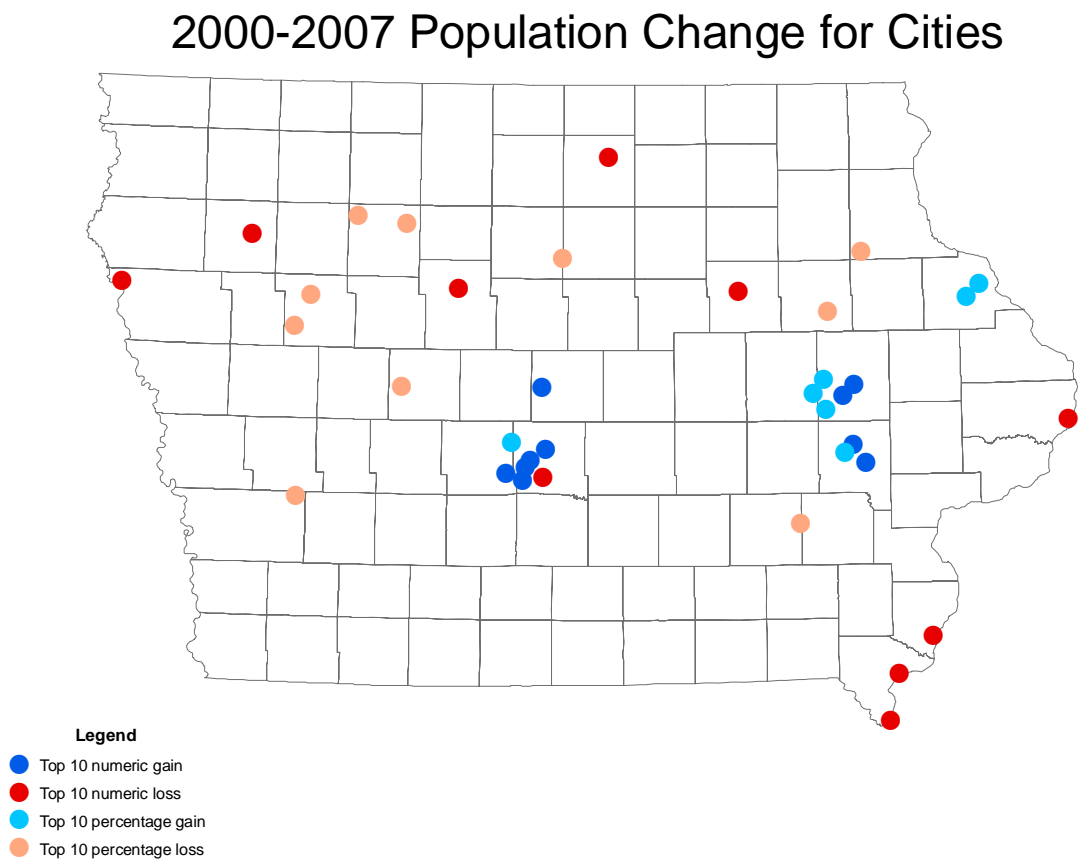
**Table 5. 10 Fastest-Growing Cities in Iowa (with 2000 population > 500)**

<b>City</b>	<b>Population in 2007</b>	<b>Population in 2000</b>	<b>Numeric change 2000-2007</b>	<b>Percentage change 2000-2007</b>	<b>Ranking by % change</b>
<b>Waukee</b>	12,029	5,370	6,659	124.0%	2
<b>North Liberty</b>	10,982	5,359	5,623	104.9%	3
<b>Granger</b>	1,058	546	512	93.8%	5
<b>Fairfax</b>	1,759	937	822	87.7%	6
<b>Johnston</b>	15,261	8,749	6,512	74.4%	8
<b>Peosta</b>	1,129	654	475	72.6%	9
<b>Tiffin</b>	1,714	1,060	654	61.7%	12
<b>Palo</b>	954	616	338	54.9%	14
<b>Atkins</b>	1,515	987	528	53.5%	15
<b>Asbury</b>	3,754	2,449	1,305	53.3%	16

## Geographic Patterns of Change

This section illustrates the locations of growing and declining cities in Iowa. Figure 5 shows the locations of the top and bottom 10 performers as measured by rate of change and numeric change. Figure 6 shows the direction of population change for all cities in Iowa. Among all 947 incorporated places in Iowa, 206 gained in population, 14 had no growth, and 727 cities lost population. In 34 of Iowa's 99 counties, all cities within the county experienced population declines.

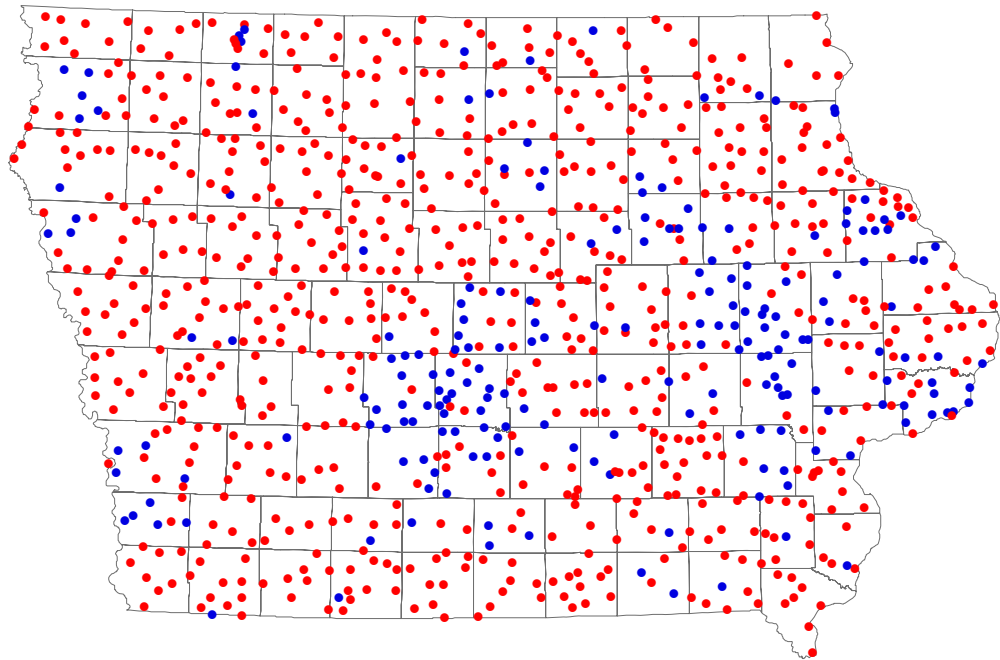
Figure 4



*(The top 10 rankings were determined only for cities > 500 population in 2000.)*

Figure 5

## 2000-2007 Population Change for Cities



**Legend**

- Decline
- Gain

## Population Changes in Iowa's Largest Cities

Table 6 illustrates the performance of Iowa's 10 largest cities by their population size in 2000.

- West Des Moines had the largest numeric population gain (7,594) and the fastest rate of growth (16.1 percent).
- The second and third fastest-growing among Iowa's 10 largest cities were Ames (7.7 percent) and Iowa City (7.3 percent).
- We've had population declines in four of our 10 largest cities, including Sioux City (-2.8%), Waterloo (-3.4%), Des Moines (-1.0%), and Dubuque (-0.9%).
- Sioux City experienced the largest numeric population loss among these cities (-2,376).

**Table 6. Performance of Iowa's 10 Largest Cities**

City	Population in 2007	Population in 2000	Numeric change 2000-2007	Percentage change 2000-2007	Ranking by % change
Des Moines	196,998	199,033	(2,035)	-1.0%	276
Cedar Rapids	126,396	121,524	4,872	4.0%	123
Davenport	98,975	98,359	616	0.6%	185
Sioux City	82,684	85,060	(2,376)	-2.8%	380
Iowa City	67,062	62,517	4,545	7.3%	93
Waterloo	66,387	68,734	(2,347)	-3.4%	429
Council Bluffs	59,921	58,298	1,623	2.8%	147
Dubuque	57,313	57,816	(503)	-0.9%	268
Ames	54,745	50,814	3,931	7.7%	90
West Des Moines	54,726	47,132	7,594	16.1%	51

Table 7 illustrates population changes for cities with 50,000 or more population (in 2007) in Iowa compared to similar cities in neighboring states. The region includes 95 cities in Iowa, Illinois, Missouri, Kansas, Nebraska, South Dakota, North Dakota, Minnesota, and Wisconsin.

The most rapidly-growing city in the 9-state region was O'Fallon, Missouri. That city more than doubled its population between 2000 and 2007, growing from 48,883 to 74,976 residents at a rate of 53.5 percent. Other rapidly-growing cities included Joliet, Illinois (34.8%); Olathe, Kansas (26.8%); Lakeville, Minnesota (25.5%); and Bolingbrook, Illinois (25.0%).

West Des Moines was the highest-ranking among Iowa's large cities in terms of its rate of growth for the 2000 to 2007 period (rank of 15 among 95 cities) and the 2006 to 2007 period (rank of 20).

Large cities in decline included Berwin, Illinois with a decline of 6.8 percent; Decatur, Illinois (-6.6%); and Florissant, Missouri (-5.6%). Waterloo was the only Iowa city among the 10 fastest-declining large cities in the 9-state region.

**Table 7. Population Change for Cities of 50,000 or Greater Population in Iowa and Surrounding States**

State	City Name	2000-2007 Change	2000-2007 % Change	2006-2007 % Change	% Change Rank, 2000- 2007	% Change Rank, 2006- 2007	2007 Population
IA	Ames	3,931	7.7%	1.3%	33	24	54,745
IA	Cedar Rapids	4,872	4.0%	1.2%	48	32	126,396
IA	Council Bluffs	1,623	2.8%	0.3%	51	65	59,921
IA	Davenport	616	0.6%	0.1%	62	75	98,975
IA	Des Moines	(2,035)	-1.0%	0.5%	71	55	196,998
IA	Dubuque	(503)	-0.9%	0.3%	70	61	57,313
IA	Iowa City	4,545	7.3%	1.1%	36	35	67,062
IA	Sioux City	(2,376)	-2.8%	0.1%	82	76	82,684
IA	Waterloo	(2,347)	-3.4%	-0.4%	86	86	66,387
IA	West Des Moines	7,594	16.1%	1.5%	15	20	54,726
IL	Arlington Heights	(2,736)	-3.6%	-0.4%	87	88	73,693
IL	Aurora	27,536	19.2%	1.2%	11	31	170,855
IL	Berwyn	(3,682)	-6.8%	-0.8%	95	93	50,334
IL	Bloomington	6,983	10.7%	1.4%	25	22	72,416
IL	Bolingbrook	14,097	25.0%	0.9%	5	40	70,476
IL	Champaign	5,233	7.4%	1.2%	34	34	75,515
IL	Chicago	(59,386)	-2.1%	0.3%	77	64	2,836,658
IL	Cicero	(4,640)	-5.4%	-0.8%	92	94	80,976
IL	Decatur	(5,444)	-6.6%	-0.3%	94	85	76,674
IL	Des Plaines	(118)	-0.2%	-0.1%	67	83	57,008
IL	Elgin	9,526	10.1%	3.3%	26	3	104,288
IL	Evanston	1,666	2.2%	0.6%	54	47	75,905
IL	Hoffman Estates	3,477	7.0%	1.3%	37	27	53,145
IL	Joliet	37,223	34.8%	3.1%	2	5	144,316
IL	Mount Prospect	(2,560)	-4.5%	-0.6%	91	91	53,711
IL	Naperville	13,893	10.8%	0.7%	24	46	142,479
IL	Normal	6,259	13.8%	1.5%	17	16	51,716
IL	Oak Lawn	(1,838)	-3.3%	-0.5%	85	89	53,407
IL	Orland Park	4,542	8.9%	0.4%	30	56	55,663
IL	Palatine	1,057	1.6%	0.0%	59	77	67,317
IL	Peoria	441	0.4%	0.3%	63	62	113,546
IL	Rockford	5,210	3.4%	1.5%	50	18	156,596
IL	Schaumburg	(3,262)	-4.3%	-0.6%	89	90	72,147
IL	Skokie	3,311	5.2%	0.0%	42	79	66,659
IL	Springfield	5,411	4.8%	0.5%	43	53	117,090
IL	Tinley Park	9,027	18.0%	0.9%	12	39	59,102
IL	Waukegan	3,097	3.5%	0.1%	49	73	91,138
IL	Wheaton	(978)	-1.8%	0.2%	74	66	54,552
KS	Kansas City	(4,546)	-3.1%	0.2%	83	71	142,320
KS	Lawrence	9,646	12.0%	0.8%	22	42	89,852
KS	Manhattan	6,024	13.2%	3.2%	19	4	51,707
KS	Olathe	24,943	26.8%	3.0%	3	6	118,034
KS	Overland Park	19,939	13.3%	1.6%	18	12	169,403
KS	Shawnee	11,962	24.9%	1.2%	6	28	59,958
KS	Topeka	(694)	-0.6%	0.4%	69	59	122,642
KS	Wichita	9,490	2.7%	1.2%	53	30	361,420
MN	Apple Valley	4,547	10.0%	0.5%	27	54	50,074
MN	Blaine	10,401	23.1%	1.4%	7	21	55,415
MN	Bloomington	(3,726)	-4.4%	0.2%	90	70	81,446
MN	Brooklyn Park	4,006	5.9%	1.5%	41	19	71,394
MN	Burnsville	(1,102)	-1.8%	0.2%	75	68	59,118

State	City Name	2000-2007 Change	2000-2007 % Change	2006-2007 % Change	% Change Rank, 2000- 2007	% Change Rank, 2006- 2007	2007 Population
MN	Coon Rapids	164	0.3%	0.2%	65	67	61,771
MN	Duluth	(1,922)	-2.2%	-0.1%	78	80	84,397
MN	Eagan	194	0.3%	0.6%	64	50	63,751
MN	Eden Prairie	6,759	12.3%	0.5%	21	51	61,660
MN	Lakeville	10,986	25.5%	2.5%	4	7	54,114
MN	Maple Grove	11,503	22.8%	1.5%	8	17	61,868
MN	Minneapolis	(5,355)	-1.4%	0.6%	72	48	377,392
MN	Minnetonka	(773)	-1.5%	0.2%	73	69	50,329
MN	Plymouth	5,163	7.8%	0.8%	32	45	71,057
MN	Rochester	11,463	13.1%	1.8%	20	11	99,121
MN	St. Cloud	6,817	11.4%	0.6%	23	49	66,503
MN	St. Paul	(9,537)	-3.3%	0.4%	84	60	277,251
MN	Woodbury	8,983	19.3%	3.4%	10	2	55,446
MO	Blue Springs	6,832	14.2%	2.4%	16	9	55,031
MO	Columbia	13,916	16.3%	2.4%	14	8	99,174
MO	Florissant	(3,048)	-5.6%	-0.7%	93	92	50,919
MO	Independence	(2,567)	-2.3%	-0.1%	79	81	110,704
MO	Kansas City	8,832	2.0%	0.8%	56	43	450,375
MO	Lee's Summit	12,102	17.1%	1.3%	13	25	82,820
MO	O'Fallon	26,143	53.5%	4.2%	1	1	74,976
MO	St. Charles	2,928	4.8%	1.6%	44	14	63,644
MO	St. Joseph	(78)	-0.1%	1.3%	66	26	73,912
MO	St. Louis	2,570	0.7%	-0.9%	61	95	350,759
MO	St. Peters	3,599	7.0%	0.9%	38	37	55,092
MO	Springfield	2,642	1.7%	0.8%	58	44	154,777
NE	Lincoln	22,348	9.9%	1.4%	28	23	248,744
NE	Omaha	33,324	8.5%	1.1%	31	36	424,482
ND	Bismarck	3,749	6.7%	1.6%	39	13	59,503
ND	Fargo	2,009	2.2%	0.9%	55	38	92,660
ND	Grand Forks	2,374	4.8%	0.1%	46	72	51,740
SD	Rapid City	4,348	7.3%	1.5%	35	15	63,997
SD	Sioux Falls	26,869	21.6%	2.2%	9	10	151,505
WI	Appleton	(300)	-0.4%	0.3%	68	63	70,017
WI	Eau Claire	2,983	4.8%	1.2%	45	33	64,980
WI	Green Bay	(2,006)	-2.0%	0.1%	76	74	100,781
WI	Janesville	2,719	4.5%	0.5%	47	52	63,012
WI	Kenosha	5,698	6.3%	0.9%	40	41	96,265
WI	La Crosse	(1,246)	-2.4%	0.0%	80	78	50,719
WI	Madison	19,344	9.2%	1.2%	29	29	228,775
WI	Milwaukee	5,203	0.9%	-0.1%	60	82	602,191
WI	Oshkosh	1,193	1.9%	0.4%	57	57	64,592
WI	Racine	(3,050)	-3.7%	-0.2%	88	84	78,805
WI	Waukesha	1,794	2.8%	0.4%	52	58	66,762
WI	West Allis	(1,491)	-2.4%	-0.4%	81	87	59,763

Iowa State University does not discriminate on the basis of race, color, age, religion, national origin, sexual orientation, gender identity, sex, marital status, disability, or status as a U.S. veteran. Inquiries can be directed to the Director of Equal Opportunity and Diversity, 3680 Beardshear Hall, (515) 294-7612.