

Are Agricultural Professionals' Farmland Value and Crop Price Forecasts Consistent?

Wendong Zhang,¹ Wei Zhang,² and Chad Hart³

1: Assistant Professor, Department of Economics and Center for Agricultural and Rural Development, Iowa State University, 478C Heady Hall, 518 Farmhouse Lane, Ames, Iowa 50011. 515-294-2536, wdzhang@iastate.edu

2: Assistant Professor of Marketing, Iowa State University, 3123 Gerdin Business Building, 2167 Union Drive, Ames, Iowa 50011, 515-294-7911, wzhang@iastate.edu

3: Associate Professor, Department of Economics and Center for Agricultural and Rural Development, Iowa State University, 478F Heady Hall, 518 Farmhouse Lane, Ames, Iowa 50011, 515-294-9911, chart@iastate.edu

1 **Are Agricultural Professionals' Farmland Value and Crop Price Forecasts Consistent?**

2

3

4 **Abstract**

5 Using agricultural professionals' forecasts of future farmland values and corn and soybean cash
6 prices for their service area, we analyze whether their land and corresponding crop price
7 expectations are consistent. We find that changes in expected land prices over time are positively
8 correlated with expected crop price changes, suggesting these two forecasts are somewhat
9 consistent. More importantly, we find that the linkage between these two forecasts is
10 significantly stronger in the medium- and long-term as opposed to the short-term, as well as a
11 substantially stronger correlation for districts that have heavier reliance on crop production as a
12 net farm income source.

13 **Acknowledgement**

14 This work was supported in part by the USDA National Institute of Food and Agriculture Hatch
15 projects 1010309, and NC1014, NC221, NCT-194.

16

1 **Are Agricultural Professionals' Farmland Value and Crop Price Forecasts Consistent?**

2

3 Expert opinion surveys are commonly used to forecast future events, such as political election
4 results or critical future market outcomes, such as oil and gas prices, inflation and interest rates,
5 economic growth, and key commodity market fluctuations. With respect to agricultural markets,
6 agricultural commodity futures and options markets are typically used to gauge critical
7 movements in key markets, like corn or soybeans. On the other hand, there are few surveys that
8 consistently and systematically solicit opinions of agricultural professionals or producers
9 regarding future farmland price changes.¹ One prominent example is the survey of farm
10 managers and rural appraisers at the annual Soil Management and Land Valuation (SMLV)
11 conference organized by Iowa State University. In many of these opinion surveys, respondents
12 are expected to forecast both future land and crop prices (Federal Reserve Bank of Chicago
13 2017, Purdue University and the CME Group 2017). However, as far as we know, the previous
14 literature hasn't closely examined the relationship between respondents' land and crop price
15 forecasts in these expert or producer opinion surveys.

16 Using individual responses from 162 agricultural professionals that attended the May 2016
17 SMLV conference, we examine the consistency between agricultural professionals' land price
18 forecasts with their corresponding corn and soybean price forecasts. We examine the consistency
19 of these price forecasts in three dimensions: first, we examine the temporal consistency of price
20 forecast within an individual market—corn, soybean, or land—over time. Second, using
21 correlation statistics, we explore whether agricultural professionals' price forecasts are consistent
22 across agricultural commodity markets, and more importantly, whether they are consistent across

23 crop and land markets. Third, we examine how the relationships between these expectations vary
24 across the forecasting horizon (short- vs. medium-to-long-term) and reliance on crop income.

25 **Data**

26 Sponsored by Iowa State University College of Agriculture and Life Sciences and Iowa State
27 University Extension and Outreach, the SMLV conference is regularly attended by farm
28 managers, rural appraisers, real estate brokers, and others interested in the land market in Iowa
29 and across the Midwest. This is the longest running conference at Iowa State—its ninetieth
30 meeting was held in 2017. The SMLV conference has consistently received strong support from
31 the Iowa Chapter of American Society of Farm Managers and Rural Appraisers throughout the
32 years. Every year, the Iowa Appraiser Examining Board and Iowa Real Estate Commission
33 approve the conference for six hours of continuing education credits for renewal of real estate,
34 appraiser, and broker licenses. At the conference, participants get an update on various current
35 issues in farm management, rural property appraisal, and the agricultural sector in general. In
36 addition, since 1964, every participant has an opportunity to “gaze into their crystal ball” and
37 provide their estimates of future corn and soybean prices and land values in Iowa.

38 Figure 1 shows the half-page sheet presented to conference participants on site asking about their
39 estimates of future land values, as well as corn and soybean prices. At the May 2016 conference,
40 186 out of 280 conference participants completed and returned their estimates, providing our
41 study sample. We further deleted 24 observations with missing values on either land or crop
42 forecasts. The final data consist of 162 observations.

43 We solicited participants’ opinion-based farmland price forecasts for five horizons, which is a
44 mix of short-, medium-, and long-term forecasts. The short-term forecast estimates land prices
45 six months after the conference (November 2016). The medium-term forecasts explore land

46 values in the two to five year range (November 2017 and November 2020). The long-term
47 projections look 10 to 25 years out. In addition to land value questions, participants are also
48 asked to predict corn and soybean cash prices for their service area in November 2016, 2017, and
49 2020.

50 In this article, we are **mainly** interested in the consistency of land and corn price forecasts from
51 the SMLV conference. We are particularly interested in whether the land price implied in a
52 respondent's crop price forecast is consistent with the self-reported land price forecast for the
53 same horizon. As a result, we mainly rely on the short- and medium-term land and crop price
54 forecast questions in this article. We drop the long-term forecast questions for 2025 and 2040 as
55 there are no corresponding forecasted commodity prices.

56 **Results – Graphical Analysis**

57 **I. Time Consistency of Expectations**

58 Table 1 summarizes the data and Table 2 presents the correlation statistics between short-term
59 (six-month) expectations with medium-term (18-month and 54-month) expectations for both
60 crop and land prices. The three graphs shown in Figure 2 further provide graphical evidence of
61 consistency of price forecasts over time for corn, soybean, and land prices. They clearly reveal a
62 strong (greater than 0.8) correlation between agricultural professionals' short-term, six-month
63 expectation with their medium-term, 18-month price expectation in each of the markets. This
64 suggests that agricultural professionals who hold a more optimistic view of near-term crop or
65 land market values within six months tend to project higher 18-month corn prices than their
66 peers—the corn price forecasts for 2016 and 2017 are mostly clustered between \$3.00/bushel and
67 \$4.00/bushel, or more specifically between \$3.50/bushel to \$4.00/bushel, with a few pessimistic
68 agricultural professionals projecting a \$2.00/bushel corn price. Similarly, those who reported

69 much higher soybean or land price forecasts for 2016 compared to others tend to forecast higher
70 prices for these markets for 2017 or 2020 as well.

71 As of May 2016, the price estimate for November 2016 seems to be less correlated with that of
72 November 2020, when compared to the correlation between the November 2017 and November
73 2020 price expectations, suggesting that most agricultural professionals forecast a turnaround in
74 the crop and land markets in late 2017 and a transition from dwindling crop and land prices to a
75 slow rebound.

76 **II. Cross-Market Consistency of Expectations**

77 *Cross-market correlation in forecasted prices*

78 Next, we examine whether the reported price forecasts are consistent across different agricultural
79 commodity groups, and more importantly, whether the commodity price forecast is consistent with
80 land price forecast. First, Figure 3 shows the correlation between the corn and soybean price
81 forecasts for both November 2016 and November 2020. The strong correlation between corn and
82 soybean price forecasts for both 2016 and 2017 clearly shows that the participating agricultural
83 professionals realize the interconnectedness across agricultural commodity markets and have a
84 similar view regarding the future trends for corn and soybean prices. It is also interesting to see
85 that the crop price forecasts for 2020 are more dispersed compared to those for 2016, suggesting
86 heterogeneous expectations regarding the future corn-to-soybean price ratios, which has
87 significant implication of crop rotation choices.

88 We further compare the reported corn price forecast by a respondent with their reported land
89 price forecast for 2016 and 2020. Figure 4 shows a scatterplot of respondents' corn price
90 forecasts with same-year land price forecasts. A visual examination of Figure 4 seems to suggest
91 that there is no obvious correlation or clear trend between the corn price and land price forecasts.

92 The lack of correlation is true for both 2016 and 2020 values. As discussed earlier, it seems that
93 the participating agricultural professionals' corn price forecasts are more clustered between
94 \$3.00/bushel and \$4.00/bushel, however, their land price forecasts have a much larger
95 variability, ranging from \$4,000/acre to \$10,000/acre.

96 Table 3 presents cross-market correlation statistics between the corn and soybean markets, as
97 well as crop and land market price expectations. This table shows a similar pattern as in Figures
98 3 and 4 but it also investigates the correlation between soybean price forecasts and land price
99 forecasts. While the correlations remain very consistent among the crop price projections over
100 the various time periods, the correlations between the crop price and land value projections
101 evolves over time with the higher correlations being observed as the time gap between the crop
102 price and land value projection period grows.

103 It seems rational to suggest that agricultural professionals seem to rely on corn (soybean) futures
104 prices when reporting corn (soybean) price forecasts, and thus report a fairly similar value. In
105 contrast, these participants may rely more on the recent farmland transactions or appraisals in
106 their local service areas as a reference for the future farmland market. As shown in Figure 1, we
107 ask participants to forecast land prices for their service area (i.e., the area in which they provide
108 professional service), which helps explain the wide range in their responses for the forecasted
109 land prices. In other words, the agricultural professionals may rely on different information when
110 forecasting crop and land prices—the crop futures market could easily be used as a benchmark
111 when forecasting crop prices, however, land price is driven by a host of other characteristics
112 beyond crop prices, including most notably land quality, crop yields, and crop-livestock mix, as
113 well as local market characteristics like proximity to urban areas.

114 *Cross-market correlation in forecasted price changes*

115 Differences in information sources and systems resulted in the seemingly apparent lack of
116 correlation between forecasted crop prices and land prices. However, because the comparison in
117 Table 3 is for price levels rather than changes in forecasted prices over time, this does not
118 necessarily mean that they are inconsistent, as agricultural professionals' expected land market
119 fluctuations may still be correlated with expected crop market fluctuations. As the results in
120 Table 3 showed, the correlation structure strengthens as the time gap between the forecast
121 periods grows.

122 We examine whether there is a positive relationship between changes in their corn price forecasts
123 from 2016 to 2017 or from 2016 to 2020 and changes in land prices for the same time period.
124 With USDA and the Federal Reserve frequently reporting changes in farm income and asset
125 values, it is possible that agricultural professionals are forecasting future market trends in
126 percentage change terms. Figure 5 presents two scatterplots and the fitted linear regression line
127 connecting percentage change in a respondent's corn price forecast from 2016 to 2017 with the
128 percentage change in their land price forecast. It shows that there is a positive relationship
129 between corn price changes and land price changes from 2016 to 2017.

130 *Short-term vs. Long-term correlation*

131 Economic theory of land value argues that farmland market represents the net present value of all
132 future income streams, and farmland is often treated as a long-term investment. As a result, land
133 price changes are not only linked with contemporaneous crop market fluctuations, but also
134 reflecting future crop market changes, in addition to other factors such as interest rates, land
135 quality, urban influences, etc. As a result, we perceive a stronger correlation between crop price
136 outlook with land price outlook in the longer term than that in the short-term, especially given

137 that agricultural professionals seem to benchmark their crop price forecasts to prices from the
138 futures markets.

139 The upper part of Figure 5 focuses on the short-term expectation changes from 2016 to 2017,
140 while the lower part shows the medium-to-long-term expectation changes from 2016 to 2020.
141 This reveals that there is a positive relationship between corn price changes and land price
142 change, and the positive correlation is stronger for the medium-term expectation changes than for
143 the short-term. The fitted line suggests that a one-percent increase in expected corn price from
144 2016 to 2017 would lead to about a corresponding 0.2 percent expected rise in land value, while
145 a one-percent increase in expected corn price from 2016 to 2020 would lead to a corresponding
146 0.4 percent increase in expected land value. The higher magnitude suggests that the short-term
147 land value expectations by agricultural professionals could be influenced by a host of factors
148 other than crop price fluctuations, however, their medium-to-long-term land value expectations
149 are more aligned with fluctuations in underlying assets such as corn.

150 Table 4 offers additional insights on the pairwise correlation statistics between the percentage
151 changes in expected crop prices with percentage change in expected land prices by analyzing the
152 linkage between soybean price expectations with land price expectations. Interestingly, the
153 correlation between soybean price changes with land price expectations for both short-term and
154 medium-to-long-term is statistically higher than that between corn and land price expectations,
155 this suggests agricultural professionals seem to place a higher weight on fluctuations in the
156 soybean market than the corn market when forecasting future farmland prices. This could be a
157 result of growing significance of soybean in the crop mix in Iowa and across the Midwest over
158 the past century, especially over the last fifty years (USDA NASS 2017c).

159 *Correlation for crop-intensive vs. non-crop-intensive regions*

160 The final aspect of the cross-market correlation we examine is the difference resulting from the
161 variation in crop-livestock mix and thus the varying degree of reliance on crop income. The
162 capitalization model suggests that localized land market tends to result from localized farm
163 income trends, and thus we argue that for regions that rely more heavily on crop production and
164 crop income, the crop market movements would be more significantly capitalized and
165 correspondingly we could expect to see a greater correlation in agricultural professionals' crop
166 price predictions with land price predictions for these crop-intensive regions. In light of this, we
167 broke the nine crop reporting districts in Iowa into two distinct groups—crop-intensive districts
168 in which crop production and crop income plays a relatively larger role in driving net income,
169 including Northwest, North Central, West Central, and Central Iowa; and non-crop-intensive
170 districts in which crop income plays a relatively smaller role and other sources of income, such
171 as livestock income or pasture production, can provide more influence. Although this is a
172 distinction between areas in Iowa, the logic that greater correlation between crop and land
173 market movements for crop-intensive areas applies well beyond the state.

174 Table 5 replicates the correlation statistics shown in table 4, but rather than pooling all
175 observations, we separately correlate expected land price change with expected corn price
176 change for crop-intensive districts and non-crop-intensive districts. We reconfirm our findings
177 earlier that there is a stronger link between expected crop price changes with expected land price
178 changes in the medium-to-long term as opposed to short-term, regardless of crop intensity. More
179 interestingly, our results reveal a much stronger correlation between crop market movements and
180 land market fluctuations. In crop-intensive districts, a one-percent increase in expected corn
181 prices from November 2016 to November 2017 would lead to a 0.25 percent increase in the

182 corresponding expected land prices, which is substantially higher than the average marginal
183 effect for the non-crop-intensive districts.

184 **Conclusions and Practical Implications**

185 Using agricultural professionals of forecasts of short- and medium-term farmland values and
186 crop prices in the future for their service area at Iowa State University's SMLV conference, we
187 provide the first formal examination whether and how their land and corresponding corn and
188 soybean price expectations are consistent. Our results demonstrate that a positive correlation
189 between expected crop price changes and expected land price changes, suggesting that these two
190 forecasts are consistent. More importantly, we find that while the correlation between the six-
191 month, short-term land and crop price forecasts are relatively small, the medium-term land value
192 forecast is more strongly associated with corresponding corn and soybean price forecasts. In
193 addition, our results reveal much stronger correlation between these two forecasts for crop
194 reporting districts with more intensive crop production and thus heavier reliance on crop income
195 as a source for farm income. Finally, the preferences of agricultural professionals are stable over
196 time, with more optimistic professionals forecasting higher values for both short- and medium-
197 term forecasts than their peers.

198 This paper has important practical implications for farm management and land investment and
199 appraisals. First, our results show that experts' opinion surveys' land price expectations are
200 somewhat rational in the sense that their movements are positively correlated with fluctuations in
201 crop market fundamentals. Secondly, the medium-term expectation is more closely tied with
202 market fundamentals while short-term expectation is often in response to a host of instantaneous
203 factors that may not drive long-run land market movements. Finally, expected land prices for a
204 local area are governed by factors that influence the net income in that area most, and factors

205 other than crop prices, such as livestock market trends and recreation demand, are critical for
206 land market trends in non-crop-intensive areas.

207 Although this paper uses data from agricultural professionals based in Iowa, the results and
208 implications are relevant for other Corn Belt states. We recognize that more work is needed to
209 further examine the cross-market correlation between crop and land price forecasts, in particular
210 a formal model to link crop prices and margins to land values over time. Currently, we are also
211 examining the accuracy of the crop and land price forecasts through comparison with the realized
212 future values, and investigating how agricultural professionals form these short-term and long-
213 term land price expectations.

214 **References**

- 215 Federal Reserve Bank of Chicago, 2017, “Land Values and Credit Conditions
216 Survey”, <https://www.chicagofed.org/research/data/ag-conditions/index>
- 217 Purdue University and the CME Group, 2017, “Ag Economy
218 Barometer”, <https://ag.purdue.edu/commercialag/ageconomybarometer/>
- 219 USDA CropScape, 2017, “Cropland Data Layer”, <https://nassgeodata.gmu.edu/CropScape/>
- 220 USDA Economic Research Service 1985, “Agricultural Land Values and Markets: Outlook and Situation
221 Report”, CD-90, August 1985, <http://usda.mannlib.cornell.edu/usda/ers/CD//1980s/1985/CD-08-06-1985.pdf>
- 222 USDA National Agricultural Statistical Service 2017a, “2016 State Agriculture Overview for
223 Iowa”, https://www.nass.usda.gov/Quick_Stats/Ag_Overview/stateOverview.php?state=IOWA
- 224 USDA National Agricultural Statistical Service, 2017b, “QuickStats - Crop and Livestock Production
225 Statistics”, <https://quickstats.nass.usda.gov/>
- 226 USDA National Agricultural Statistical Service, 2017c, “QuickStats - Crop Acreage”, data drawn from
227 Acreage and Prospective Plantings reports, <https://quickstats.nass.usda.gov/>

228

229

230

231

Tables and Figures

232 **Figure 1. Land and commodity price forecast sheet at the 2016 SMLV conference.**

2016 Estimated Land and Commodity Prices

Name of primary county that you provide service in: _____

Number of counties that you provide service in: _____

Please circle your primary occupation:

Farm Manager Rural Appraiser Broker/Realtor Ag Lender Other

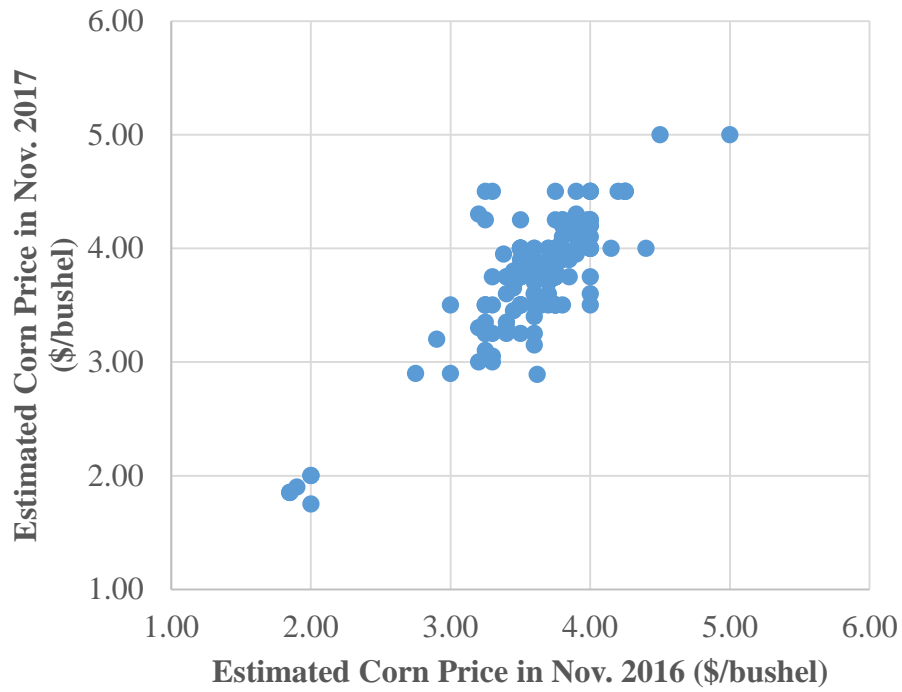
Number of years of experience you have in your primary occupation: _____ Years

Your Estimate for Your Service Area	LAND	CORN	SOYBEAN
November 1, 2016	\$ /Acre	\$ /Bu.	\$ /Bu.
November 1, 2017	\$ /Acre	\$ /Bu.	\$ /Bu.
November 1, 2020	\$ /Acre	\$ /Bu.	\$ /Bu.
November 1, 2025	\$ /Acre		
November 1, 2040	\$ /Acre		

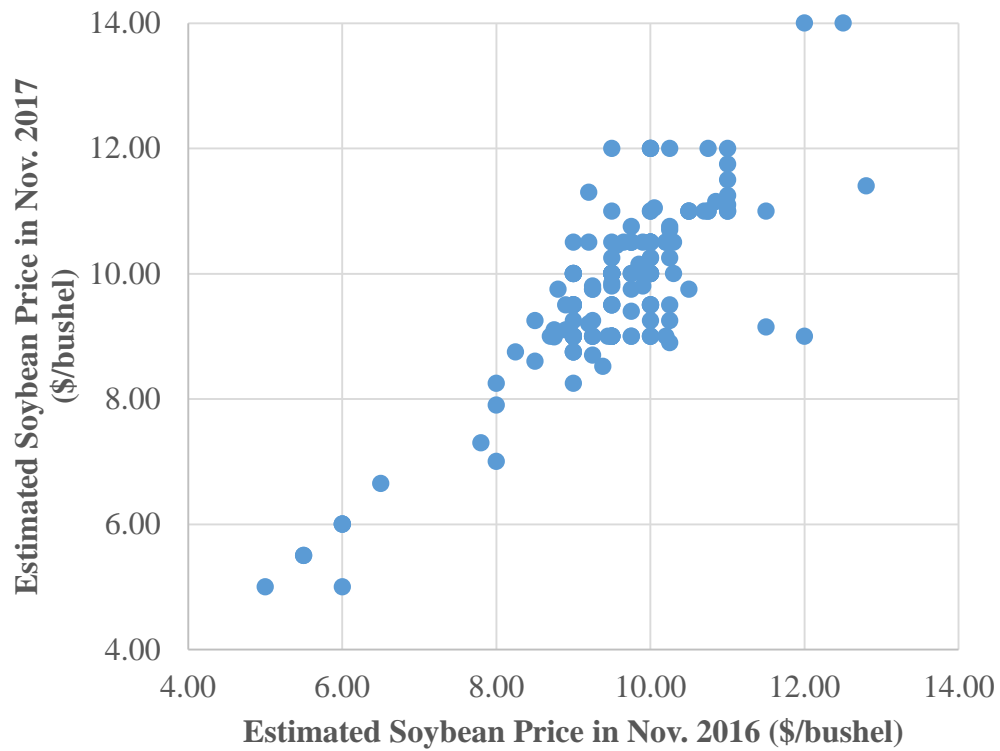
233

234

235 **Figure 2. Scatterplot between 6-month vs. 18-month crop and land expectation.**



236



237

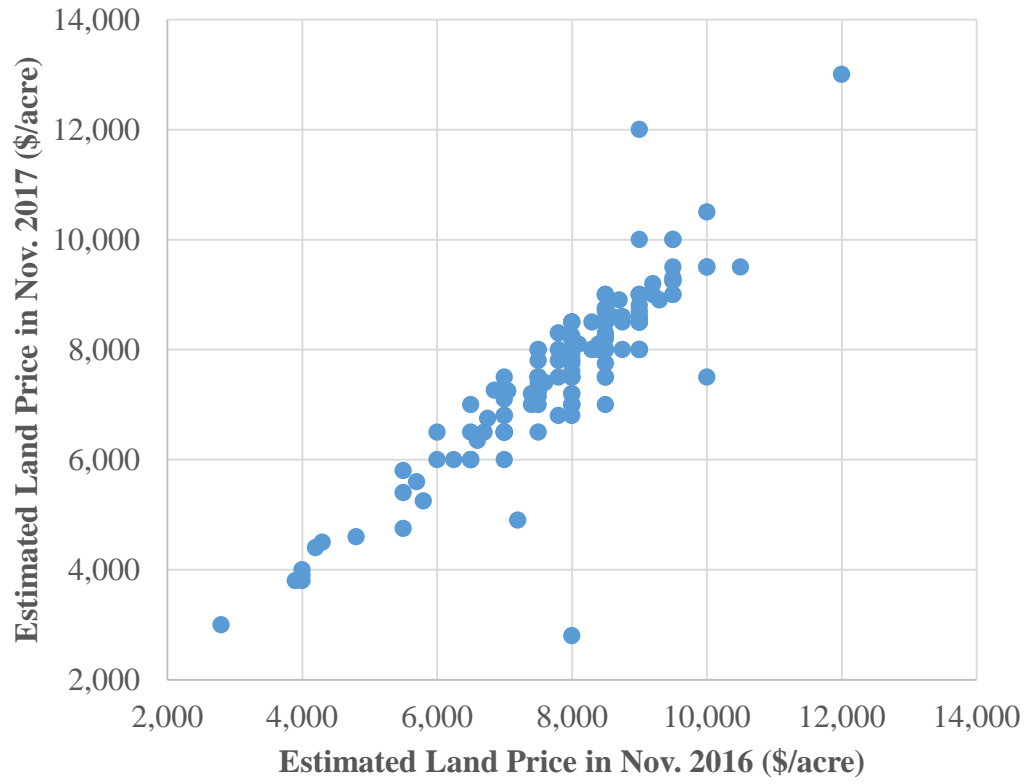
238

239

240

241

242 **Figure 2 (continued). Scatterplot between 6-month vs. 18-month crop and land expectation.**

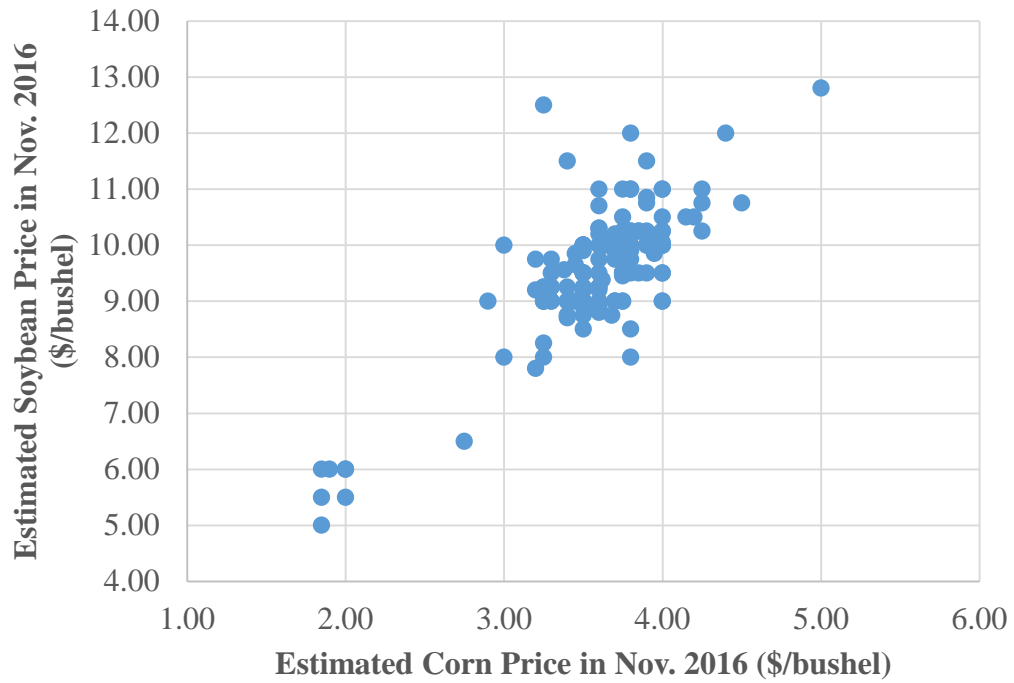


243

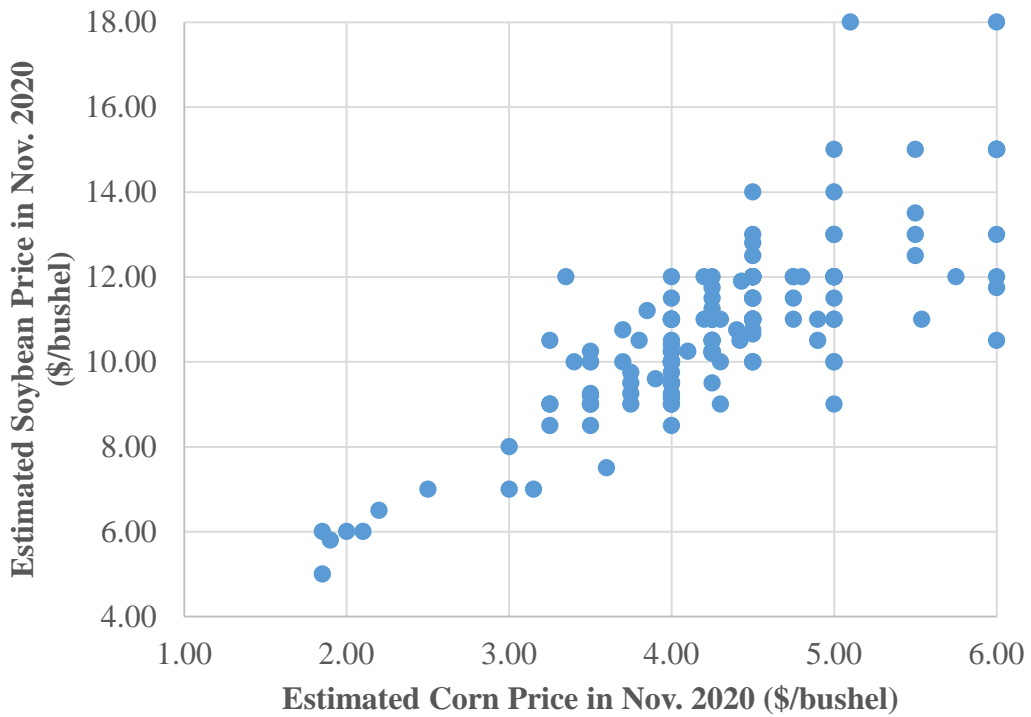
244

245

246 **Figure 3. Scatterplot between corn and soybean expected prices.**

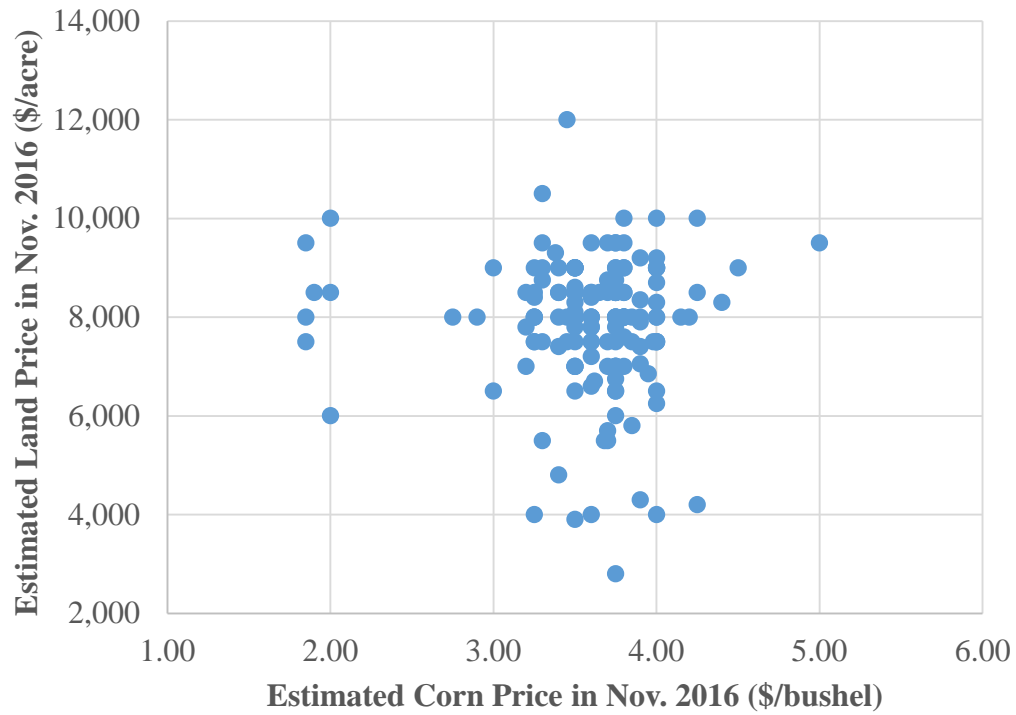


247

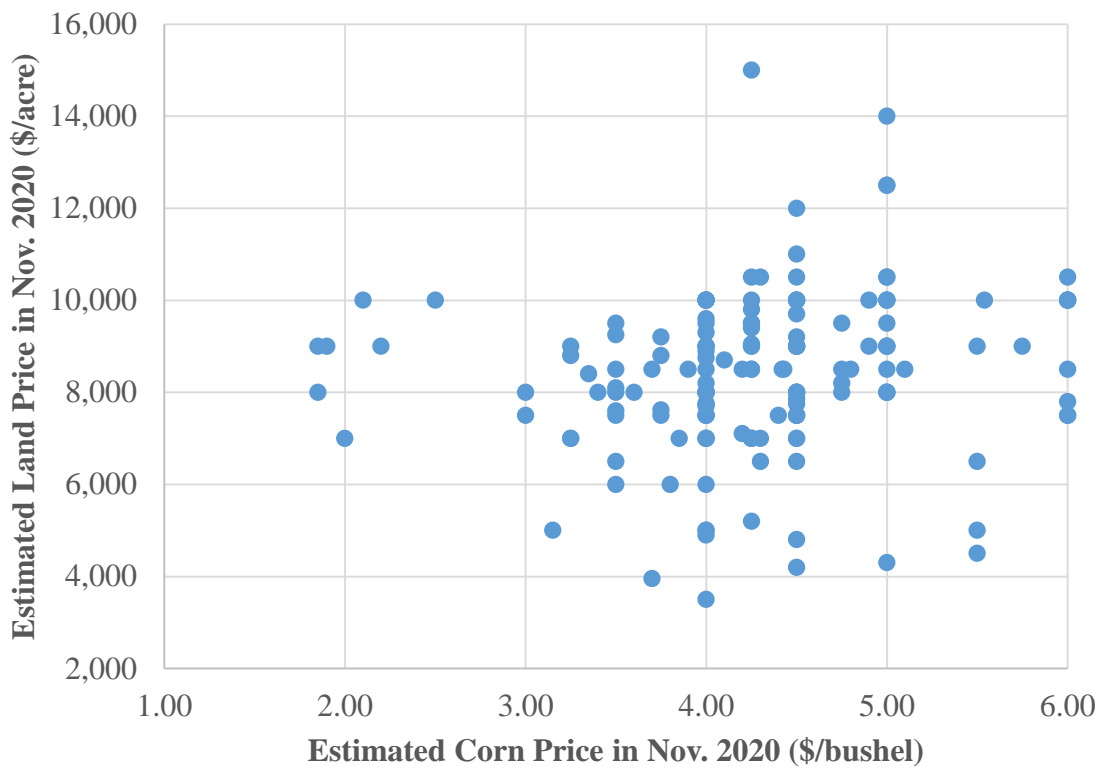


248

249 **Figure 4. Scatterplot between corn and land expected prices.**

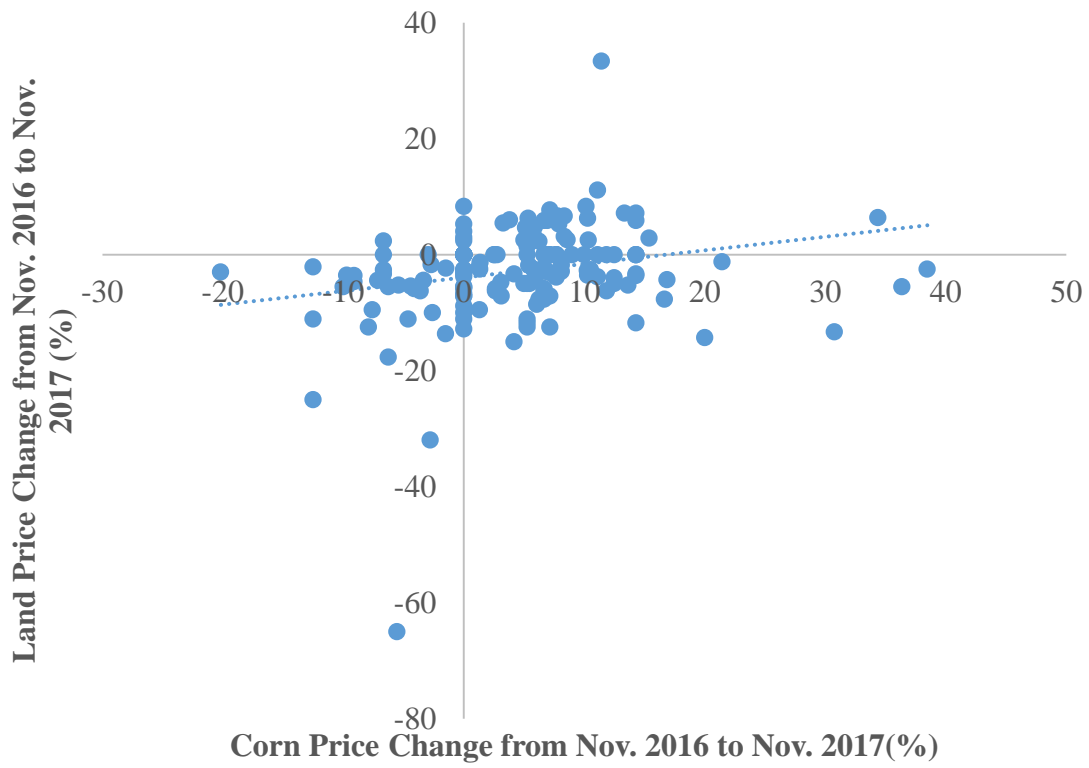


250

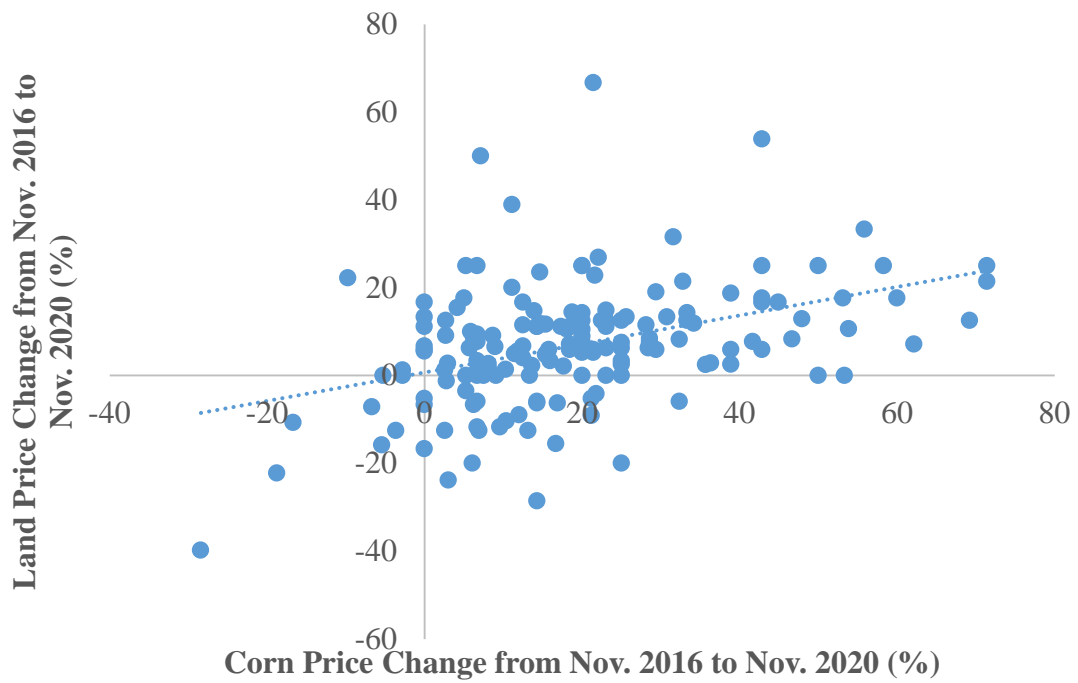


251

252 **Figure 5. Correlation between corn price changes with land price changes.**



253



254

255

256

Table 1. Summary Statistics of Land and Crop Price Expectations

Variables	Unit	Mean	Std Dev	Min	Median	Max
Corn 2016	\$/bushel	3.59	0.46	1.85	3.69	5.00
Corn 2017	\$/bushel	3.75	0.55	1.75	3.80	5.00
Corn 2020	\$/bushel	4.27	0.81	1.85	4.25	6.00
Soy 2016	\$/bushel	9.54	1.16	5.00	9.53	12.80
Soy 2017	\$/bushel	9.74	1.38	5.00	9.92	14.00
Soy 2020	\$/bushel	10.75	1.96	5.00	10.75	18.00
Land 2016	\$/acre	7,880	1,341	2,800	8,000	12,000
Land 2017	\$/acre	7,649	1,470	2,800	8,000	13,000
Land 2020	\$/acre	8,399	1,733	3,500	8,500	15,000
Corn change '16-'17	%	4.42	8.49	-20.16	5.26	38.15
Corn change '16-'20	%	19.02	17.48	-28.41	16.30	71.43
Soy change '16-'17	%	2.06	7.64	-25.00	2.44	26.32
Soy change '16-'20	%	12.66	15.34	-41.67	10.00	75.61
Land change '16-'17	%	-2.87	8.36	-65.00	-2.60	33.33
Land change '16-'20	%	6.89	13.88	-29.76	6.59	66.67
Total Observations			162			

260 **Table 2. Correlation between Short-term and Medium-term Crop and Land Expectations**

Panel I: Corn		
Nov. 2016 vs. Nov. 2017	Nov. 2017 vs. Nov. 2020	Nov. 2016 vs. Nov. 2020
0.8455	0.6239	0.7171
Panel II: Soybean		
Nov. 2016 vs. Nov. 2017	Nov. 2017 vs. Nov. 2020	Nov. 2016 vs. Nov. 2020
0.8344	0.6233	0.7869
Panel III: Land		
Nov. 2016 vs. Nov. 2017	Nov. 2017 vs. Nov. 2020	Nov. 2016 vs. Nov. 2020
0.8860	0.7578	0.8038

261

262

263 **Table 3. Cross-market Correlation between Short-term and Medium-term Crop and Land**
 264 **Expectations**

Panel I: Corn vs. Soybean		
Nov. 2016 vs. Nov. 2017	Nov. 2017 vs. Nov. 2020	Nov. 2016 vs. Nov. 2020
0.8008	0.8049	0.8056
Panel II: Corn vs. Land		
Nov. 2016 vs. Nov. 2017	Nov. 2017 vs. Nov. 2020	Nov. 2016 vs. Nov. 2020
-0.0403	0.0087	0.1487
Panel III: Soybean vs. Land		
Nov. 2016 vs. Nov. 2017	Nov. 2017 vs. Nov. 2020	Nov. 2016 vs. Nov. 2020
-0.0793	-0.0005	0.1520

265

266

267 **Table 4. Correlation between Expected Crop Price Changes with Expected Land Price**
 268 **Changes**

Panel I: Expected Corn Price Change vs. Expected Land Price Change	
Corn '16-'17 vs. Land '16-'17	Corn '16-'20 vs. Land '16-'20
0.2374	0.4087
Panel II: Expected Soybean Price Change vs. Expected Land Price Change	
Soybean '16-'17 vs. Land '16-'17	Soybean '16-'20 vs. Land '16-'20
0.2525	0.4464

269

270

271 **Table 5. Correlation between Expected Corn Price Changes with Expected Land Price**
 272 **Changes for Crop-Intensive and Non-Crop-Intensive Districts**

Panel I: Crop Intensive Districts	
Corn '16-'17 vs. Land '16-'17	Corn '16-'20 vs. Land '16-'20
0.2638	0.3526
Panel II: Non-Crop-Intensive Districts	
Corn '16-'17 vs. Land '16-'17	Corn '16-'20 vs. Land '16-'20
0.2043	0.2745

273

274

¹ Federal Reserve Bank at Chicago's Ag Credit Survey seeks ag lenders' forecasts on future farmland value changes since early 1990s (Federal Reserve Bank of Chicago 2017), and USDA Economic Research Service used to survey producers regarding future farmland prices in the 1980s (USDA ERS 1985), and in 2016 Purdue University started a monthly Ag Economy Barometer based on a nationwide sample of producers which includes questions on directions of future farmland value expectations (Purdue University and the CME Group 2017).